

AGO

Art Gallery of Ontario

YEAR IN
REVIEW

2016
2017



Message from the President and Director

We had a great year! Our staff and volunteers achieved this by focusing on our mandate to increase access, share great art and facilitate learning.

The AGO presented extraordinary exhibitions, including *The Idea of North: The Paintings of Lawren Harris*, *Small Wonders: Gothic Boxwood Miniatures*, and *Mystical Landscapes: Masterpieces from Monet, Van Gogh and more*. We are particularly proud that these exhibitions travelled to Paris, Vienna, Amsterdam, New York, Los Angeles and Boston.

We acquired more than 1,000 works during the year, bringing each area of our collection to a higher level of excellence. A major highlight was the acquisition of 522 photographs by renowned artist Diane Arbus. The AGO now holds the second largest Arbus collection in the world.

We welcomed more than 965,000 visitors, the highest annual attendance since the AGO re-opened in 2008. This includes 46,000 students, who explored our galleries and created their own works of art through school group programs linked to the Ontario education curriculum.

The Grange Park revitalization project got underway this year. This major capital initiative will completely transform a neglected inner city park to an inspired and sustainable green space. The new Grange Park opens to the public in summer 2017. At this time, we will also unveil a new south entrance that links the AGO to the park. Our *Look:Forward* project also began this past year, triggering a major reinstallation of our collection over the next 18 months. One of the first initiatives was to install eight of Michael Snow's *Walking Woman* sculptures in the Maxine Granovsky & Ira Gluskin Hall of our Main Entrance so visitors can experience art from the moment they arrive. These initiatives will set us up for an outstanding year in 2017-18.

Our sincere thanks go to our public and private supporters. The Ontario Ministry of Tourism, Culture and Sport is our primary government partner, with additional assistance from the City of Toronto, Canada Council for the Arts and the Department of Canadian Heritage. In the private sector, we are very grateful for the generosity of individuals, corporations and foundations that enable us to provide a full and diverse range of programs to the public. Their ongoing commitment is the key to our success!

Maxine Granovsky Gluskin
President



Stephan Jost
Michael and Sonja Koerner Director, and CEO



Highlights of the Year

APRIL 1, 2016 – MARCH 31, 2017

We shared great art:

After five years of preparation, *Mystical Landscapes: Masterpieces from Monet, Van Gogh and more* opened at the AGO in October to rave reviews. Organized by the AGO and the Musée d'Orsay in Paris, the exhibition brought together some of the world's best and most famous paintings – including works that have never before left their home museum. More than 37 artists were represented in the exhibition, including Tom Thomson, members of the Group of Seven, and Emily Carr. After showing in Toronto, the exhibition travelled to the Musée d'Orsay, where it wowed critics and audiences alike.



Comedian, musician, actor and writer Steve Martin brought international attention to one of Canada's greatest artists with *The Idea of North: The Paintings of Lawren Harris*. Curated by Martin in collaboration with the Hammer Museum and the AGO, the exhibition introduced Lawren Harris's iconic northern landscapes to audiences in Los Angeles and Boston before opening in Toronto on Canada Day. The AGO's presentation offered an expanded experience, including some of the artist's early paintings of Toronto neighbourhoods, accompanied by works from contemporary Canadian artists Nina Bunjevac, Jennifer Baichwal and Nick de Pencier, Tin Can Forest, and Anique Jordan, that explored the issue of Canadian identity in relation to Toronto's diverse populations.



Visitors had the opportunity to view four of the most ambitious works created by the British modern artist Sir Anthony Caro in the exhibition *Anthony Caro: Sculpture Laid Bare*. Organized by the AGO, the installation marked the first presentation of these works in North America and provided an interesting counterpoint to our Henry Moore Sculpture Centre.

We also began a major initiative to bring more great works out of our vaults and into our public spaces. The *Look:Forward* project is an exciting reinstallation of the AGO Collection that will increase our works on display from 2,800 to 3,400 in more than 50 galleries, including public spaces that were previously without art. One of the first initiatives was to install eight of Michael Snow's *Walking Woman* sculptures in our Main Entrance lobby so you can experience art from the moment you arrive.



Highlights of the Year

APRIL 1, 2016 – MARCH 31, 2017

You got creative:

Visitors of all ages had plenty to see and do at the AGO. Artmaking activities, interactive performances and gallery visits during our Family Sundays, March Break and Family Day brought out the artist in kids and parents alike. Our summer art camps combined creative sessions by artist instructors with outdoor play. And our Gallery School courses provided a more intensive learning experience for children, youth and adults interested in honing their artistic skills.

More than 46,000 students from JK to Grade 12 explored our galleries and created their own works through our school group programs. AGO school group programs provide links to the Ontario education curriculum with issue-related themes such as identity, global connections and the environment. Through a

partnership with the Toronto District School Board, we also provided programming for the TDSB's Expressions of First Nations, Métis and Inuit Cultures course, including gallery tours and artist-led workshops.

Our award-winning AGO Youth Council organized programs and activities that reflected the concerns, interests and passions of people between the ages of 14–24. Our Free After Three drop-in programs connected youth with artists for a myriad of workshops, including tie-dyeing, silkscreening, skateboard-building, cake art and breakdancing.

Real became virtual:

The groundbreaking exhibition *Small Wonders: Gothic Boxwood Miniatures*, organized by the AGO in partnership with The Metropolitan Museum of Art, New York, and the Rijksmuseum, Amsterdam, used cutting-edge technology to give a better understanding of the precise miniature rosaries, prayer beads and

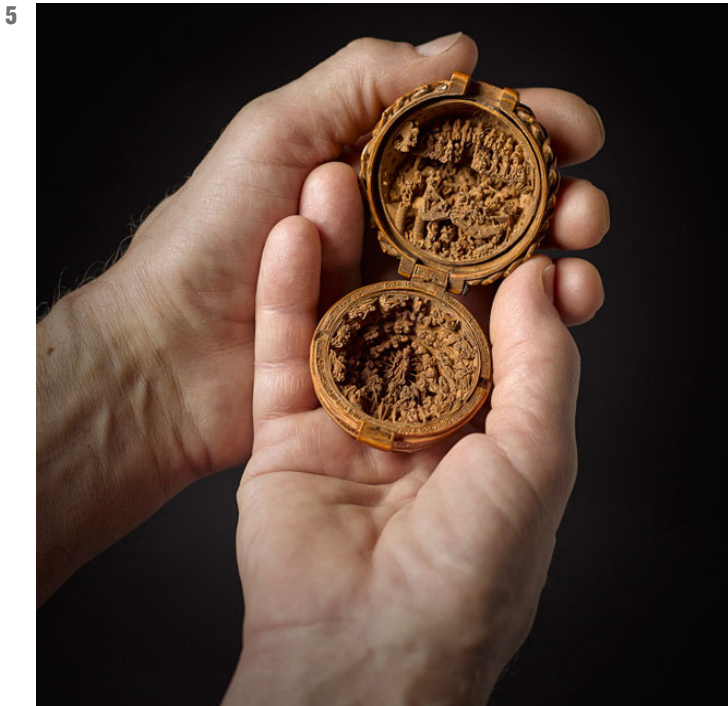
4



Highlights of the Year

APRIL 1, 2016 – MARCH 31, 2017

altarpieces on display. As a special feature of the exhibition, visitors were able to use a virtual reality (VR) headset to explore the intricate carvings of a prayer bead, made visible through the power of micro-computed tomography (micro-CT). Produced by the Canadian Film Centre's Media Lab (CFC Media Lab)



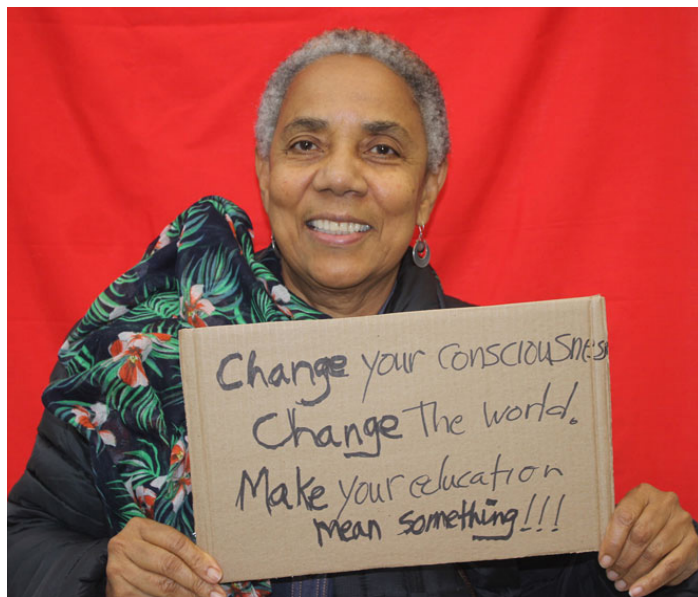
and Seneca College School of Creative Art & Animation, this artistic and technical collaboration between the AGO and interactive artist-designer Priam Givord marks the first time anyone has been able to move through, around and within one of these small wonders. For those who want to examine and study these delicate works in even greater depth, we created The Boxwood Project website, at boxwood.ago.ca, with special zoom-in photography of the works, research essays and teacher resources.

The AGO was one of over 100 venues worldwide to host Art+Feminism's Wikipedia Edit-A-Thon, a campaign to improve coverage of women and the arts on Wikipedia, and to encourage female editorship. More than 40 writers took part in the event, creating and adding to articles about Canadian women artists, curators and art writers.

Throughout the year, visitors continued to share their love of the AGO on Facebook, Twitter and Instagram by posting selfies with their favourite works, commenting on their best-loved/least-loved exhibitions and sparking conversations about what art means to them – all at @agotoronto.

We spoke out:

Artists communicate through their art and their messages came through loud and clear in our programming. The exhibition *Toronto: Tributes + Tributaries, 1971–1989* showcased a pivotal era in our city's history with more than 100 works by 65 artists who responded to the social and political upheaval of their times. To add a current-day perspective, a special programming series was presented with new commissions and repeat performances by artists involved in the exhibition, including Keith Cole, Louise Lilliefeldt, Walter Scott, Johanna Householder, and Lillian Allen.



We provided a forum for contemporary artists from around the world to express their views through their art. *Hurvin Anderson: Backdrop*, organized by the Contemporary Art Museum St. Louis, gave Toronto audiences a comprehensive look at this British artist, with works portraying charged social histories and shifting notions of cultural identity.

Highlights of the Year

APRIL 1, 2016 – MARCH 31, 2017

Theaster Gates: How to Build a House Museum, organized by the AGO, was the first solo exhibition in Canada of this Chicago-based artist. Through his art, Gates transforms landmarks into legacy sites that honour and remember Black experience through music, dance, video, sculpture and painting.



Francis Alÿs: A Story of Negotiation, organized by the Museo Tamayo Arte Contemporáneo in Mexico City, made its only Canadian stop at the AGO, with works engaging directly with urgent social issues, from the war in Afghanistan to border politics around the world.

Our monthly First Thursday program offered new opportunities throughout the year for local and international artists to explore different social themes with the public through installations, performances, hands-on artmaking activities and pop-up talks.

We spent time with our friends...

Toronto's arts scene is filled with creative talent, and something special happens when we work together. We partnered with The National Ballet of Canada to debut an innovative new commission, *The Dreamers Ever Leave You*, a ballet inspired by the work of Lauren Harris. Performed by artists of the National Ballet inside a gallery space at the AGO and accompanied by live music, the ballet gave the audience freedom to move through the space alongside the dancers.

For Luminato, we installed a new contemporary acquisition *Untilled (Liegender Frauenakt) [Reclining Female Nude]* by French artist Pierre

Huyghe at The Hearn Generating Station. This statue of a reclining woman is distinguished by a beehive that entirely obscures the head. Special thanks go to the Canadian Opera Company and the Four Seasons Centre for Performing Arts for providing the bees and beehive from their rooftop colony.

We partnered with Scotiabank CONTACT Photography Festival to present the exhibition *Outsiders: American Photography and Film, 1950s–1980s*. This exhibition featured unforgettable images from the late 1950s to the mid-1980s, including works by some of the greatest artists of the period, such as Diane Arbus, Garry Winogrand, and Danny Lyon.

To profile the pivotal role that artists play in addressing larger social issues, the AGO partnered with Massey Hall, the Canadian Broadcasting Corporation and Banff Centre for Arts and Creativity to launch a new semi-annual series of artist-driven dialogues, entitled *AGO Creative Minds at Massey Hall*. The first Creative Minds event featured author André Alexis, visual artist Rebecca Belmore, filmmaker Deepa Mehta and musician Buffy Sainte-Marie sharing their thoughts on art and social justice. The event was streamed online and broadcast live on radio by CBC; it remains



Highlights of the Year

APRIL 1, 2016 – MARCH 31, 2017

available for online viewing at agocreativeminds.ca, where it has received more than a million hits.

For *Nuit Blanche*, the AGO co-produced with the City of Toronto a new performance by renowned contemporary artist Rebecca Belmore, as part of the exhibition *Militant Nostalgia*, curated by Paco Barragán. The night also included an installation of the new artwork *Legacy* by AGO artist in residence Jérôme Havre.

In partnership with the Institute for Canadian Citizenship, we were able to say “Welcome”, “Bienvenue”, and “Ahlan” to nearly 100 Syrian newcomers who took part in two special afternoons at the AGO, discovering Canadian art and learning about the country they now call home. As the groups toured through our Canadian galleries, we discussed Canada’s identity through nature, the history of Toronto and Ontario, stories of Canadian immigration, and the diverse backgrounds and traditions that make Canada so unique.

We couldn’t have done it without you!

We couldn’t bring great art and people together without your generosity. Your support throughout the year made it possible for us to bring internationally renowned artists through our door, give audiences the opportunity to discover new artists, provide visitors with engaging experiences and share art with our community. The AGO’s operating revenues are a dynamic balance of public and private funds. Our sincere thanks go to the Ontario Ministry of Tourism, Culture and Sport as our primary government partner, with additional assistance from the City of Toronto, Canada Council for the Arts, and the Department of Canadian Heritage. Our private sector support comes from the generosity of individuals, corporations and foundations that make many exhibitions, programs and events possible. And our deep appreciation goes to AGO Members – who now number close to 100,000 – for their ongoing commitment to our organization and their love of art!



IMAGES

1. Art collector and exhibition curator Steve Martin
2. The AGO’s Walker Court is emblazoned for *Mystical Landscapes*
3. Michael Snow’s *Walking Woman* welcomes visitors at the AGO’s Main Entrance
4. Tens of thousands of students enjoyed visiting the AGO through school group programs
5. Netherlandish, *Prayer Bead* (open view), 1500–1530. 56.5 mm x 56.5 mm x 116 mm (open). The Thomson Collection @ Art Gallery of Ontario. AGOID 29365
6. Canadian poet Lillian Allen. Image courtesy the artist
7. Theater Gates, *House Heads Liberation Training*, 2016. Still image from video. © 2016 Theater Gates. Photo: Chris Strong Photography
8. First Thursday art activities at the AGO
9. A visit to the AGO by the Ahlan Canada program. Photo: the Institute for Canadian Citizenship/Andrew Williamson

Acquisition Highlights

APRIL 1, 2016 – MARCH 31, 2017

The AGO's acquisition activity focuses on strategically adding works of the highest artistic quality to continue strengthening our collection. In 2016–17, 1,067 works were added to the AGO's holdings, bringing each area of our collection to a higher level of excellence.

The following images highlight a key acquisition for each of our collecting areas: Canadian; Modern and Contemporary; European; Photography; and Prints & Drawings.



Paul Ranson

French, 1864–1909

Tigre dans les jungles, 1893

lithograph, printed in three colours on paper

58.2 x 41.7 cm (sheet)

Gift of Sondra and Allan Gottlieb, 2016



Circle of Bernaert van Orley

Flemish, c.1488–1541

A Pair of Censuring Angels, c.1535–1540

oil on wood

angel looking right: 80 x 54 cm; angel looking left: 79.5 x 54 cm

Purchase, 2016

Acquisition Highlights

APRIL 1, 2016 – MARCH 31, 2017



Adrián Villar Rojas
born Rosario, Argentina, 1980
Today We Reboot the Planet, 2013

glass and steel shelves containing sculptures of mixed media
Purchase, with funds from the Modern and Contemporary Curatorial Committee, the Michael and Diane Hasley Fund, the Janet and Michael Scott Fund, the David Yuile and Mary Elizabeth Hodgson Fund, the Richard Ivey Foundation Contemporary Art Fund, the Contemporary Circle Fund, the Jay Smith and Laura Rapp Fund, and the Elcy Wallace Fund, 2016

© Adrián Villar Rojas



Ruth Cuthand
born Prince Albert, Saskatchewan, Canada, 1954
Don't Breathe, Don't Drink, 2016

94 vessels with glass beads and resin, hand beaded blue tarpaulin tablecloth and gas board

Purchase, with funds from Karen Schreiber and Marnie Schreiber through The American Friends of the Art Gallery of Ontario, Inc., 2017.

© Ruth Cuthand



Diane Arbus
born and died New York, New York, United States, 1923–1971
Identical twins, Roselle, N.J., 1966, 1966

gelatin silver print, printed between 1967–1970

36.2 x 36.2 cm

Part of a group of 522 photographs gifted by Phil Lind, Sandra Simpson, Jay Smith, Jozef Straus, and Robin and David Young, 2016

© The Estate of Diane Arbus

Board of Trustees

APRIL 1, 2016 – MARCH 31, 2017

The Art Gallery of Ontario is governed by a Board of Trustees, responsible for the overall direction of the Gallery. The AGO's board members generously volunteer their time, knowledge and expertise to ensure the institution's effective operation.

Maxine Granovsky Gluskin, President (CF)
Tony Gagliano, Honourary Chair (ON)
Hussain Amarshi (ON)
A. Charles Baillie (M)
Shelagh Barrington, Volunteer President (M)
Avie Bennett, C.C. (TE)
David Binet (M)
Shary Boyle (M)
David Campbell (TE)
Camillo di Prata (ON)
Rupert J. Duchesne, Vice President (M)
Ivan Fecan (M)
Andrew Federer (M)
James D. Fleck (TE)
Allan Gotlieb, C.C. (TE)
Anthony R. Graham, (TE)
Bob Harding, Vice President (CF)
Michael Hasley (TE)
Ydessa Hendeles (TE)
Councillor Michelle Holland (T)
Beth Horowitz (ON)
Rosamond Ivey, Vice President (ON)
Michael M. Koerner (TE)
Phil Lind (CF)
Liza Mauer (Honourary Trustee)
Shabin Mohamed (M)
Kenneth Montague (ON)
Rebecca Murray (ON)
Gordon Nixon (M)
Gilles Ouellette (TE)
Jonas Prince (CF)
Carol Rapp (TE)

Jeffrey Remedios (ON)
Councillor Jaye Robinson (T)
Richard Rooney (M)
Samuel Sarick (TE)
Judy Schulich (ON)
Eleanor Shen (ON)
Jay Smith, Vice President (CF)
The Hilary Weston (TE)
Robin Young (TE)

OFFICERS

Stephan Jost, Michael and Sonja Koerner Director,
and CEO

Erin Prendergast, Chief of Staff & Corporate Secretary

Amanda Dench, Executive Assistant, Board of Trustees
& Deputy Corporate Secretary

(M)	Trustee, elected from the Membership
(CF)	Trustee, appointed by the College of Founders
(ON)	Trustee, appointed by the Lieutenant Governor in Council
(T)	Trustee, appointed by the City of Toronto
(TE)	Trustee Emeritus, appointed by the AGO Board of Trustees

The Art Gallery of Ontario is funded in part by the Ontario Ministry of Tourism, Culture and Sport. Additional operating support is received from the City of Toronto, the Canada Council for the Arts and generous contributions from AGO members, donors and private sector partners.

Annual Campaign

APRIL 1, 2016 – MARCH 31, 2017

The Art Gallery of Ontario gratefully acknowledges the generosity of those patrons, corporations and foundations that have contributed to the annual campaign. These annual gifts are critical to sustaining the high calibre of collections, programs and exhibitions for which the Gallery is known.

SIGNATURE PARTNERS

Aimia | AGO Photography Prize

Aimia

Conservation Program

American Express

AGO Artist Projects

RBC

EXHIBITION SUPPORTERS

Hurvin Anderson: Backdrop

Generously supported by
Maxine Granovsky Gluskin &
Ira Gluskin
Liza Mauer & Andrew Sheiner

Small Wonders: Gothic Boxwood Miniatures

Lead Supporters
Maxine Granovsky Gluskin & Ira Gluskin
Generously supported by
Hans & Susan Brenninkmeyer
David G. Broadhurst
Nancy Lockhart & The Murray Frum Foundation
The Dorothy Strelsin Foundation
With assistance from
Anthony & Helen Graham
Online catalogue raisonné and digital photography made possible through the generous support of
The Family of the late Ken Thomson

The Idea of North: The Paintings of

Lawren Harris
Lead Sponsor
RBC Capital Markets
Generously supported by
Heffel Fine Art Auction House
E. & G. Odette Foundation
The Donald R. Sobey Family Foundation
Anonymous

Mystical Landscapes: Masterpieces from Monet, Van Gogh and more

Lead Sponsor
RBC
Lead Supporters
Tim & Frances Price
Generously supported by
Richard M. Ivey

Mrs. John Flemer

Painting Tranquility: Masterworks by Vilhelm Hammershøi

Lead Supporters
Ron & Gitte Granofsky
Generously supported by
The Koerner Foundation

Thomas Ruff: Object Relations

Generously supported by
Phil Lind
Co-presented by
Scotiabank CONTACT Photography Festival

Theater Gates: How to Build a House Museum

Generously supported by
Bob Dorrance & Gail Drummond
Maxine Granovsky Gluskin & Ira Gluskin

The Jay and Barbara Hennick Family Foundation

Nadir & Shabin Mohamed
Partners in Art

Jay Smith & Laura Rapp
Catalogue supported by
Bob Dorrance & Gail Drummond
Nadir & Shabin Mohamed
Kenneth Montague
Elisa Nuyten & David Dime
Eleanor & Francis Shen
Jay Smith & Laura Rapp

Francis Alÿs: A Story of Negotiation

Generously supported by
Panasonic Canada Inc.
Robert Harding & Angel Yang
Nadir & Shabin Mohamed
Jay Smith & Laura Rapp
With assistance from
Jack Weinbaum Family Foundation
Elisa Nuyten & David Dime

Anthony Caro: Sculpture Laid Bare

Generously supported by
Audrey & David Mirvish

PUBLIC PROGRAMMING AND LEARNING SUPPORTERS

AGO/CONTACT International Photography Talks

Supported by
Penny Rubinoff

AGO Family Programs

Janis Rotman

AGO First Thursdays

Official Vodka Partner
Corby Spirit and Wine Limited
Official Beer Partner
Molson-Coors Canada
SABMiller/Grolsch Canada Inc.

Official Beauty Partner
Shiseido (Canada) Inc.

Out of the Vaults

Generously supported by
The Volunteers of the Art Gallery of Ontario

AGO Youth Programs

Generously supported by
Robert Harding & Angel Yang
Nancy E.A. Main
With assistance from
The Lloyd Carr-Harris Foundation

Community Access Initiatives

The Joan and Clifford Hatch Foundation
A & M Green Foundation

The Dr. Mariano Elia Hands-On Centre

The Mariano Elia Foundation

Free Wednesday Nights

BMO Financial Group
The Catherine and Maxwell Meighen Foundation

Indigenous Internship Program

Martinsell Fund

Seniors Art Engagement Program

The Elia Family

The Dreamers Ever Leave You

Generously supported by
Sandra Faire & Ivan Fecan
Joan & Jerry Lozinski
The Honourable Margaret Norrie McCain
Roger & Kevin Garland

DONOR PROGRAMS

AGO Next

Lead Sponsor
TD Bank Group
Supporting Sponsor
Tiffany & Co.

The Contemporary Circle

Charles & Marilyn Baillie
Thomas H. Bjarnason & Woodrow Wells
Beth & John P. Curtin
Sandra & Leo DelZotto
Bob Dorrance & Gail Drummond
Andrew & Andrea Federer
Angela & David Feldman
Maxine Granovsky Gluskin & Ira Gluskin
Rosamond Ivey & John Macfarlane
Gerald Sheff & Shanitha Kachan
Dougal & Barbara Macdonald
Nadir & Shabin Mohamed
Jonas & Lynda Prince
Phil Lind & Ellen Roland
Liza Mauer & Andrew Sheiner
Eleanor & Francis Shen

smART women

Lynn Factor
Andrea Federer
Leslie Gales
Heather Gotlieb
Maxine Granovsky Gluskin
Barbara Hennick

Anne Odette Kaye
Gale Kelly
Debbie Kimel
Joan Lozinski
Margaret McCain
Julia Medland
Jane Shevlen

SPECIAL PROJECT SUPPORTERS

Creative Minds

Jonas & Lynda Prince

Grange Park Revitalization Campaign

Lead Supporters
City of Toronto
The W. Garfield Weston Foundation
Generously supported and sustained by
Margaret & Jim Fleck
La Fondation Emmanuelle Gattuso
TD Bank Group
Ivey Foundation
Supported and sustained by
J.P. Bickell Foundation
T.R. Meighen Family Foundation

EVENT SUPPORTERS

Mystical Landscapes Gala

Lead Sponsor

RBC

Patrons

Aimia Inc.

John C. and Sally Horsfall Eaton Foundation

Empire Communities

Tony & Shari Fell

Maxine Granovsky Gluskin & Ira Gluskin

Gordon & Jill Rawlinson

Eleanor & Francis Shen

Sofina Foods Inc.

Tricon Capital

Massive Party

Lead Sponsor
TD Bank Group
Supporting Sponsor
Purpose Investments Inc.
MAC Cosmetics
Artist Project Patrons
Delaney Capital Management
The Delaney Family Foundation
D.H. Gales Family Foundation
Goldman, Sachs & Co.
PwC Canada

Art Toronto Opening Night Preview

Presenting Sponsor
RBC Wealth Management
Official Art Insurer
AXA Insurance Canada
Artist Attendance Sponsor
Susan Wortzman & Glenn Smith
Patrons of the Special Collectors' Preview
1832 Asset Management
Adgar Investments & Development Ltd.
Susan & Leonard Asper
Jeanne Banka & William Kamula
Bison Transport
Chubb Insurance Company of Canada
Paul & Lynn Damp
Davis Rea Ltd. Investment Counsel
Matthew Follwell & Carol-Ann Ryan

Annual Campaign

APRIL 1, 2016 – MARCH 31, 2017

and Kalamian Art Collection Management
Georgian Capital
Gluskin Sheff + Associates Inc.
Blake & Belinda Goldring
Greg & Susan Guichon
Hill & Schumacher
Audrey & David Mirvish
Mary Montanari
Richard & Annette Pivnick
Richter LLP
Lawrie & Lori Roberts
Scott Shields Architects Inc.
Margaret Steed & Wayne Atkinson
WeirFoulds LLP
Caroline Wight

GIFT-IN-KIND DONORS

Aimia
Brightworks
Chair-man Mills Corp.
C.J. Graphics Inc.
Corby Spirit and Wine Limited
FireDog Creative
The Globe and Mail
Grey Goose
IBM Canada Limited
Kronenbourg I664
Meiomi Coastal California Wines
NOW Magazine
Proprint Services
Seneca College, Faculty of
Communication, Art and Design
Steam Whistle
Toronto Life Magazine
Vinho Verde

CORPORATIONS

\$25,000+
Aimia
American Express
BMO Financial Group
Corby Spirit and Wine Limited
Empire Communities
Heffel Fine Art Auction House
Molson-Coors Canada
Panasonic Canada Inc.
RBC
RBC Capital Markets
RBC Wealth Management
Sofina Foods Inc.
St. Joseph Communications
TD Bank Group
Thomson Works of Art Limited
TLN Teletlatino Television Group
Tricon Capital
The Volunteers of the Art Gallery of Ontario
Anonymous (2)

\$15,000–\$24,999

Astra Capital Incorporated
Bond Brand Loyalty
CIBC

Edper Investments Limited
Estee Lauder Cosmetics Limited
IBM Canada Limited
KPMG
MAC Cosmetics
Magna International Inc.
Nordstrom Inc.
Purpose Investments Inc.
SABMiller/Grosch Canada Inc.
The Woodbridge Company Limited
Torys LLP

\$7,500–\$14,999

I832 Asset Management
Chubb Insurance Company of Canada
Ericsson Canada Inc.
Loch Gallery
Sage Investments Limited
Scotiabank CONTACT Photography Festival
Shiseido (Canada) Inc.
Thomson Reuters
Vinho Verde

\$4,000–\$7,499

Adgar Investments & Development Ltd.
Bank of America Merrill Lynch
Barometer Capital Management Inc.
Bison Transport
Blake, Cassels & Graydon LLP
Bloomberg Philanthropies
BMO Capital Markets
Chubb Insurance Company of Canada
Davis Rea Ltd. Investment Counsel
Delaney Capital Management
Dr. Matthew J. Follwell Medicine Professional Corporation
Georgian Capital Partners Corporation
Gluskin Sheff + Associates Inc.
Goldman, Sachs & Co.
Hill & Schumacher
Kronenbourg I664
PwC Canada
Richter LLP
Scott Shields Architects Inc.
WeirFoulds LLP
Westerkirk Capital Inc.
Tiffany & Co.

\$2,000–\$3,999

Il by IV Design Associates Inc.
Acumen Corporate Development Inc.
Allen McDonald Swartz LLP
AXA Insurance Canada
Barclays Capital
Cindy Rendely Architecture
Citibank Canada
Creaghan McConnell Group Ltd.
Credit Suisse
Daoust Vukovich LLP
DLA Piper (Canada) LLP
Dynamic Funds
Four Seasons Hotels and Resorts
Grant & Sadvari
Heathbridge Capital Management Ltd.
HUB International

KJ Harrison & Partners Inc.
KPMB Architects
Natalie Ribkoff Fine Art Advisory Services
Owens Wright LLP
Park Property Management Inc.
Rawlco Radio Ltd.
Raymond James Ltd.
Robert Evans Investment Counsel Limited
Rogers Partners LLP
Scotiabank Group
Sknaber Limited
Universal Music
Wawanesa Insurance
Yabu Pushelberg
Zancor Homes
Anonymous (2)

FOUNDATIONS

\$25,000+

A & M Green Foundation
William R. & Shirley Beatty Charitable Foundation
The Bennett Family Foundation
J.P. Bickell Foundation
The Rudolph P. Bratty Family Foundation
The Liz and Tony Comper Foundation
The Catherine and Fredrik Eaton Charitable Foundation
John C. and Sally Horsfall Eaton Foundation
The Mariano Elia Foundation
The Angela and David Feldman Family Foundation
The Fleck Family Foundation
The Murray Frum Foundation
The Peter & Shelagh Godsoe Family Foundation
Ivey Foundation
The Koerner Foundation
The Catherine and Maxwell Meighen Foundation
T.R. Meighen Family Foundation
E. & G. Odette Foundation
Partners in Art
Rotman Family Foundation
Herb & Cece Schreiber Foundation
The Schulich Foundation
The Gerald Sheff and Shanitha Kachan Charitable Foundation
The Eleanor & Francis Shen Family Foundation
The Tamarack Foundation
Terra Foundation for American Art
The W. Garfield Weston Foundation
The Michael Young Family Foundation

\$15,000–\$24,999

The Renette and David Berman Family Foundation
The Lloyd Carr-Harris Foundation
The Thor E. and Nicole Eaton Family Charitable Foundation
The Willie and Mildred Fleischer Charitable Foundation
The Linda Frum and Howard Sokolowski Foundation
D.H. Gales Family Foundation
The Joan and Clifford Hatch Foundation
Lily Street Foundation
The Dorothy Strelsin Foundation
Jack Weinbaum Family Foundation

\$7,500–\$14,999

The Dalglish Family Foundation
The Janet E. Hutchison Foundation
Steve and Sally Stavro Family Foundation
Anonymous (2)

\$4,000–\$7,499

The Delaney Family Foundation
The John David and Signy Eaton Foundation
William & Nona Heaslip Foundation
The K. M. Hunter Charitable Foundation
The Norman & Margaret Jewison Charitable Foundation
The Joshua Foundation
The Henry White Kinnear Foundation
The Kololian Foundation
The Cyril & Dorothy, Joel & Jill Reitman Family Foundation
The Geoffrey H. Wood Foundation

\$2,000–\$3,999

Choir! Choir! Choir! Foundation
Edwards Charitable Foundation
Bertrand Gerstein Family Foundation
Jackman Foundation
The Henry & Berenice Kaufmann Foundation
Patrick and Barbara Keenan Foundation
The Kopas Family Foundation
McLean Smits Family Foundation
The Mendelson Family Foundation
R. Pivnick Family Foundation
Patricia and David Rubin Family Trust
The Young Family Foundation

INDIVIDUALS

\$25,000+

Charles & Marilyn Baillie
Diana Billes
David Binet
Thomas H. Bjarnason & Woodrow Wells
Cecily & Robert Bradshaw
Rudy & Cathie Bratty & Family
David G. Broadhurst
Tony Comper
Beth & John P. Curtin
Sandra & Leo DelZotto
Camillo O. di Prata & Family
Bob Dorrance & Gail Drummond
Rupert Duchesne & Holly Coll-Black Family
Fredrik S. & Catherine Eaton
Paul Elia
Sandra Faire & Ivan Fecan
Andrew & Andrea Federer
David & Angela Feldman
Tony & Shari Fell
Margaret & Jim Fleck
Mrs. John Flemer
Gaetano Gagliano & Family
Leslie Gales & Keith Ray
Heather & Maxwell Gotlieb
Anthony & Helen Graham
Ron & Gitte Granofsky
Maxine Granovsky Gluskin & Ira Gluskin
Greg & Susan Guichon
Robert Harding & Angel Yang
Jay & Barbara Hennick
Richard M. Ivey
Rosamond Ivey
Michael & Sonja Koerner
Phil Lind

Annual Campaign

APRIL 1, 2016 – MARCH 31, 2017

Dougal & Barbara Macdonald
Liza Mauer & Andrew Sheiner
Dr. Brian McCrindle
Audrey & David Mirvish
Nadir & Shabin Mohamed
Gordon & Janet Nixon
Tim & Frances Price
Jonas & Lynda Prince
Ida Pusateri & Family & Frank Luchetta
Carol & Morton Rapp
Richard Rooney & Laura Dinner
The Felice Sabatino Family
The Ivano Scarlato Family
Estate of Gabriella Schmidt
Honey & Barry Sherman
Judy Schulich & David Stein
Gerald Sheff & Shanitha Kachan
Eleanor & Francis Shen
Jay Smith & Laura Rapp

\$15,000–\$24,999

Christian & Ann-Brit Angle
Paul E. Bain
Geoffrey & Nancy Belsher
Donna & David Billes
John & Lisa Eaton
Thor & Nicky Eaton
Eileen Farrow
Michael Gibbens & Julie Lassonde
Dennis Kavelman & Karen Fonn
Gale M. Kelly
Michelle Koerner & Kevin Doyle
Joan & Jerry Lozinski
Margaret McCain
Estate of Barry McQuade
Elisa Nuyten & David Dime
Tamara Rebanks & James Appleyard
Gretchen & Donald Ross
Earl Rotman & Ariella Rohringer
Marion & Gerald Soloway
Maureen & Wayne Squibb
Richard M. Thomson & Heather M. Thomson
Elizabeth Tory
John Zechner & Lynn Porter Zechner

\$7,500–\$14,999

Hussain Amarshi
Patricia Anderson
Barry Appleton
Howard B. Bernick & Judy Bronfman
William Chapman
Gordon Currie & Robin Heintzman
Peter & Camilla Dalgligh
Paul & Lynn Damp
Janet E. Dewan
Glenna & George Fierheller
David & Yvonne Fleck
George & Susan Fowlie
Wayne & Isabel Fox
Valerie Godsoe Jennings
Rob Guenette
Scott & Ellen Hand
Paul Hartwick
Sheldon Inwentash & Lynn Factor
Trinity Jackman

Anne Odette Kaye & Kevin Kaye
Debbie & Warren Kimel
Greg Latremoille
Lorraine & Donald Loeb
Nancy McCain & Bill Morneau
Estate of Luella A.M.B. McCleary
June McLean
Julia Medland
Gaelen Morphet
Gilles & Julia Ouellette
Beverley Richardson
Samuel & Esther Sarick
Colin & Jane Shevlen
Nan Shuttleworth
Philip R. L. Somerville
Mr. & Mrs. William P. Wilder
David & Shelagh Wilson
Susan Wortzman & Glenn Smith

\$4,000–\$7,499

Robin & Malcolm Anthony
Jeanne Banka & William Kamula
Andrew Barnicke
Inger Bartlett & Marshal Stearns
John Brown & Melanie Edwards
Marie-Luise Burkhard
Dr. John Chiu, in memory of Yvonne Chiu
Fran & Edmund Clark
Judi & Mickey Cohen
Daniel Cook & Suzanne Ivey Cook
Dominic & Pearl D'Alessandro & Family
Joan Eakin & Chris Hoffman
Bill & Sharon Fielding
Joe & Budgie Frieberg
Roger & Kevin Garland
Blake & Belinda Goldring
Sondra & Allan Gotlieb
John & Judith Grant
Estate of Kit Gummer
The Honourable Donna J. Haley
Lorna Harris
Katharine Harvey & Clemens Sels
Tom Hilditch
Beth S. Horowitz & Pat Munson
Joe Jackman
Christopher Jones & Dr. Christine Williams
Tom Kierans & Mary Janigan
Susan & Vahan Kololian
James Lahey & Pym Buitenhuis
Nancy Lang
Annick Lapotre
Janice Lewis
Nancy E.A. Main
Mark & Judy McLean
Paul & Martha McLean
Peter & Allison Menkes
Kornelia Milborne
Kenneth Montague
Mary Montanari
Mary Murphy
Liza & Frederick Murrell
Michael Norgrove
Dawn Ogram
Robert J. Pyne

David & Shanea Rakowski
Jeffrey Remedios
Lawrie & Lori Roberts
Linda Rothstein & Ian Roland
Penny Rubinoff
Nikola Rukaj
Lionel & Carol Schipper
Harry & Lillian Seymour
John G. & Susan Shuter
Mary Sinclair
Gary & Donna Slaight
Stephen & Jane Smith
Margaret Steed & Wayne Atkinson
Margaret Sevier
Elizabeth & Bruce Walter
Caroline Wight
Joan & Bob Wright
Fumiko Yamamoto
Morden Yolles
Anonymous (4)

\$2,000–\$3,999

Michelle Abrams
Richard T. Adams & Kenneth Burke
Vanessa Alexander
Sara & Michael Angel
Marilyn Anthony & Douglas Brown
William & Sherri Appell
Robert & Mary Pat Armstrong
Judie Arrowood
Yveline Audemars & Humberto Rivero
Walter M. & Lisa Balfour Bowen
Richard J. Balfour
Colette & Tom Barber
Karen & Bill Barnett
Shelagh Barrington & George Maclaren
Howard Barton & Sally Hannon
Rochelle Baum
Carol A. Beaven
Paul Becker
Bélanger-Polak Family
William Benson
Marla Berger & Brian Greenspan
Austin C. & Nani Beutel
Karen Bir
Brenda & James Bisiker
Cathy Bisset-Parkes
Ellen & Murray Blankstein
Paul Breda
Jonathan Broer & Maureen Marshall
Reg Bronskill & Helen Findlay
Stephen Brown & Brenda Woods
Terry Burgoyne
Deborah Cameron
Debra & Barry Campbell
Paul & Catherine Campbell
Wende Cartwright & Paul Zed
Nadia & Colin Chapin
Linda Chu & John Donald
Olivia Cinqmars
Catherine & Stephen Clark
Lisa Clements
Simon Clements
Alan Cohen
Gerald Conway & Kanur Srinivasan
Richard & Barbara Conway
Sarah Crawford & David Kirkwood
Jack & Beverly Creed
Denton Creighton & Kristine Vikmanis
Barbara Crispo
Susan Crocker & John Hunkin
Kimberly Cudney & Fraser Phillips
Drs. Anne Curtis & Blake Woodside
Fern Daiter
Sue & Fred Dalley

James Darroch & Brenda Blackstock
Jennifer Dattels
Daniel Daviau & Karine Krieger
Jeanie Davis & Pamela Davis
Brian Dawson & John Therrien
Michael & Honor de Pencier
Alfonso & Beatriz Del Valle
Catherine & Robert Deluce
Elvio & Marlene DelZotto
George & Kathy Dembroski
Peter Dey & Phyllis Ortved
Margaret J. Dickson
Susan & Larry Dime
Brenda & Wilfrid Dinick
Pamela Dinsmore
David & Ann Doritty
Vlad Dzavik
Wendy & Elliott Eisen
The Elliott Family, in memory of Betty Ann Elliott
Jordan Elliott & Lynne Griffin
Doone & George Estey
Catherine Fauquier
Janice L. Feheley
Patricia Feheley
Shelley Fisher
Neil Follett
Sandra Forbes & Stephen Grant
Drew & Marie Foss
Bonnie Foster & Jim Bertram
Robert & Julia Foster
Andrew & Julie Freedman
Kathleen Freeman
Lynn & Eric From
Mimi Fullerton
Paul Gallagher
Georgia & Stephen Gerring
Robert H. Gibson
Linda Glover & Ian de Verteuil
Harriet & Jonathan Goodman
Peter Goring
Dianne & Michael Gould
Ron & Gillian Graham
Carol Gray
Shael R. Greenberg & Carley Hay
Doug Guzman, Sheila Brown & Family
Pamela R. Hallisey
Nancy & Richard Hamm
John & Ruth Hannigan
James Harbell & Patricia McQuaid
Mark Hartley & Joanna Tanner
Katharine Harvey & Clemens Sels
Michael & Diane Hasley
Robert & Valerie Hay
Ronald M. Haynes
Dianne W. Henderson
Sharon Herman
Frances & Peter Hogg
Matt Holland
Ann Horton
Susan Howard
Jane Huh & Walter Yim
Mr. & Mrs. W.B.G. Humphries
Brooke Hunter
Michael Natan Infuso
Jan Innes
Richard & Donna Ivey
Don & Betty Ivson
Robynn & Scott Jolliffe
Alex Josephson
Kelly Juhasz
Miriam Kagan
Smaro Kamboureli
Joel Kaplan & Sheila Stowell
Carolyn Kearns & Robert Hutchison

Annual Campaign

APRIL 1, 2016 – MARCH 31, 2017

Cathy & Kevin Kelly
Chris Kelson
Robert & Jacky Kennedy
June Kenner
Kristina Kerr
Raffi Kidikian
Claire Kilgour Hervey & CJ Hervey
William & Hiroko Keith
Heidi Keyes & Andrew Redlich
Naomi Kirshenbaum
Sam & Mary Kohn
Chris Kostopoulos & LEEANNE WELD
Kostopoulos
Richard Krakower
Sharon Kubicek
Terri & Avron Kulak
Kuperman Family
Arlene Kushnir
Josée Lachance & Peter Coward
Zahava Lambert
Jo Lander
Lisa Landreth
Sandra Lawrence
Scott Lawrence
Bruce Lawson
John B. Lawson
Paul Lee & Jill Maynard
Hesty Liebttag & Terry Verk
Lyne & Marcel Leroux
Susan G. Lévesque
Harriet Lewis & Eldon Bennett
Linda Lewis & Lorie Cappe
L. Liivamagi & Dr. D.N. Cash
Patricia Linders
Janet & Sid Lindsay
Anthony Lisanti
Stephen Lister & Dr. Molly Rundle
Myrna Lo
Sharon London Liss
Gordon Love
Mark Lucey & Liane Brossard
Bart MacDougall
Bruce & Barbara MacGowan
Gail MacNaughton
Janet MacPhail
Amana Manori
Paul T. Marcaccio
Janet Marsh Frosst
Fabio Mascarin
Martin & Claire McConnell
Nancy & Rob McConnell
David & Sheila McCracken
Robert & Cheryl McEwen
Rod & Gisèle McIsaac
Nancy & John McFadyen
Kathleen McLachlan
Gordon McMehen
Larry McMorran
James & Jane McMyn
John & Esther McNeil
Nicholas Metivier
Mary-Ann Metrick
Ken & Renee Metrick
Daniel & Ingrid Mida
Abby & Perry Minuk
Florence Minz

Paul & Penny Minz
Sharron Mollenhauer
J. Susan Monteith
Miss Ellen Morris
James T. Morrow & Alison J. Smith
Peter Naylor
Eric Ng
Donald E. O'Born & Mariana Pasternak
Jean Curran O'Brien
Deborah O'Leary & Craig Mading & Family
Margaret O'Sullivan & Donald Trench
Joe & Lucie Pal
Chris G. Paliare & Eva Marszewski
Jennifer A.C. Parkin & David George
Barbara & David Payne
Nancy Pencer
Robin B. Pitcher
Richard & Annette Pivnick
Erin Prendergast & Christine Kalkanis
Charles Price
Theresa Redelmeier, in memory of W.
Robert Redelmeier
Juta K. Reed
Beth & Jeff Richmond
Gerry Rocchi & Kathie Drummond
Mary & Joel Rochon
David Roffey & Karen Walsh
Judith & Jack Rose
John & Susan Rose
Larry Rosen & Susan Jackson
Irwin Rotenberg & Ann Leese
Paul & Carolyn Roth
Robert Rubinoff
Marcee Ruby & Paul Rowan
Joseph Rumi
Corinne Rusch-Drutz & Michael Steinberg
Patricia Russell
John Sartz & Mallory Morris-Sartz
William & Meredith Saunderson
Emily Schmidt & Gregory Burns
Sarah Scott
Sheila & Edward Sharp
Stephen & Rita Shefsky
Marvin & Carole Sherkin
Gary Shieck & Carmen Edgell
Dorothy Shoichet
Bernie & Bobbie Silverman
Judy Simmonds
Hugh & Katy Sisley
Barry & Harriet Sklar
Gillian Smith & Paul G. Smith
Stephanie Smith
Tenley Smith & David Locke
Jane Somerville
Harriet H. Stairs
Jack & Vicky Steckel
Jana Steele
Andrew & Gaye Stein
Andrew Stephens
Dr. & Mrs. J. M. Stewart
Michael Stewart
Gina Tapper & Walter Aronovitch
Howard W. Taylor
Michael Taylor & James O'Connor

Christy & Garth Thompson
Valerie Greenfield Thompson & Hunter E. Thompson
Joanne & David Thring
Reiko Tjaden
Doug & Gail Todgham
Diana Tremain
Boris Tsimerinov
James Turner & Craig Daniel
Gary & Cindy Ullman
Alicia Vandermeer
Stefan Varga
Sharolyn Mathieu Vettese
Alexandra von Schroeter
Lenore Walters
Kathleen Ward
Peter S. Watson
Diana & John Weatherall
Colin Webster & Sarah Dinnick
Beth Weingarden & Paul Stein
The Honourable Hilary & Mr. W. Galen Weston
Anne Wigle
Lis Wigmore & Chris Guthrie
Florence and Milton Winberg
Cate & Tony Woodward
James Wortzman & Jaimie Robins
Sally Wright
Janet & Bill Young
Linda Young
Mary-Kathleen Delicaet Young & John B. Young
Sandra L. Zakarow & James R. Fleck
Eb & Jane Zeidler
Kate Zeidler & Peter Mackenzie
Joyce & Fred Zemans
Zigrossi Family
Anonymous (II)

WORKS OF ART, LIBRARY & ARCHIVE DONORS

Jeremy Adamson
Sarah Anson-Cartwright
Barry Appleton
Barbara Astman & Joseph Anthony Baker
Thomas H. Bjarnason & Woodrow Wells
Valérie Blass
Jessica Bradley & Geoffrey James
aa bronson for General Idea Inc.
Stephen Bulger & Catherine Lash
Mary & Brendan Calder
Catriona Jeffries Gallery
William & Jane Dale
Max Dean
Ian & Kiki Delaney
Estate of George W. Edmonds
Estate of Sorel Etrog
Estate of Sydney G. Frankfort
David Franklin
The Frum Family
Mimi Fullerton
Sondra & Allan Gotlieb
Robert Harding & Angel Yang
Barbara Haber
Ms. Jamelie Hassan
The Janet E. Hutchison Foundation
Luis Jacob, in memory of Will Munro
Mariel O'Neill-Karch & Pierre Karch
Brian Lahey
James Lahey
Susan Lahey
Gordon Lenko & Lucie Charbonneau

Harvey Lewis
Phil Lind
Dr. Katharine Lochnan
Harry & Ann Malcolmson
John Massey
Brenda Coleman Milrad & Aaron Milrad
Jeff Nolte
Vivian Rakoff & Gina Shochat Rakoff
Theresa Redelmeier, in memory of W.
Robert Redelmeier
Mr. Lewis Richardson
Alison & Alan Schwartz
Mr. Jim Shedden
Sandra Simpson
Jay Smith & Laura Rapp
Barry Sniderman
Michael Snow
Maia-Mari Sutnik
Jeff Thomas
Thomson Works of Art Limited
Elke Town
Estate of Laurel Woodcock
Robin & David Young
Anonymous (5)

Permanent Donors and Members

APRIL 1, 2016 – MARCH 31, 2017

Permanent Membership status is awarded to individuals, corporations and foundations whose generous cumulative gifts have provided substantial financial support to the Gallery and enhanced its permanent collection.

FIRST FOUNDERS

The George A. Cox
Lady Eaton
Sir Joseph W. Flavelle
J.W.L. Forster
E.F.B. Johnston
Sir William Mackenzie
Hart A. Massey
Prof. James Mavor
F. Nicholls
Sir Edmund Osler
Sir Henry M. Pellatt
George Reid
Sir Edmund Walker
Mrs. H.D. Warren
E.R. Wood

VISIONARY FOUNDERS

Kenneth & Marilyn Thomson

TRANSFORMING FOUNDERS

Murray Frum & Nancy Lockhart
Maxine Granovsky Gluskin & Ira
Gluskin
Michael and Sonja Koerner
Anonymous

LANDMARK FOUNDERS

Charles & Marilyn Baillie
Vivian & David Campbell
Betty Ann & Fraser Elliott
Margaret & Jim Fleck
Mr. & Mrs. John Flemer
Rosamond Ivey
Samuel & Esther Sarick
Allan Slaight & Emmanuelle Gattuso
Joey & Toby Tanenbaum
Hon. Hilary M. Weston & Mr. Galen
Weston

GRAND FOUNDERS

Mary Stewart Bagnani
Estate of Margery Florence Boulton
Dr. Michael Braudo
Andrea & Charles Bronfman
Walter Carsen
Jean & Floyd Chalmers
Morey & Jennifer Chaplick
Roy G. Cole
F. Anthony & Elizabeth Comper
Mrs. Margaret A. Crang
Sheila Curnoe
Elizabeth A. & Richard J. Currie
Roger I. Davidson
Susan C. Davidson

Ian & Kiki Delaney
Dr. Shashi B. Dewan & Janet E. Dewan
Fredrik S. & Catherine Eaton
Ivan Fecan & Sandra Faire
Mr. & Mrs. Nicholas Fodor
Mrs. Miriam Gabo
Marvin B. Gelber
Mira Godard
Betty & Martin Goodwin
Sondra & Allan Gotlieb
Al & Malka Green
Robert Harding
Ethel & Milton Harris
Ann & Lawrence Heisey
Ydessa Hendeles
Sharon & Bernard Herman
Estate of David Y. Hodgson
Mrs. Beryl M. Ivey
Mr. Richard M. Ivey
Richard & Donna Ivey
Philip B. Lind
Martha LA McCain
Robert & Cheryl McEwen
June McLean & W.F. McLean
John & Nancy Mulvihill
Mr. & Mrs. Edmund G. Odette
Mr. Victor Peters
Carol & Morton Rapp
Mr. John B. Ridley
Mrs. Norma Ridley
Richard Rooney & Laura Dinner
Gretchen & Donald M. Ross
Margaret & Ian Ross
Sandra & Joseph Rotman
Alison & Alan Schwartz
Michael & Janet Scott
Estate of Gail Ferriss Sheard
Gerald Sheff & Shanitha Kachan
Honey & Barry Sherman
Sandra Simpson
Jay Smith & Laura Rapp
Michael Snow
Howard & Linda Sokolowski
Rose & Charles Tabachnick
Mrs. Max Tanenbaum
Elizabeth & John Tory
Mr. Vincent Tovell
Irving & Sylvia Ungerman & Family
Mrs. David H.M. Vaughan
Mrs. L. Marguerite Vaughan
Estate of Paul Weingarden
Robin & David Young
Samuel J. Zacks & Ayala Zacks
Abramov
Anonymous (4)

DISTINGUISHED FOUNDERS

Harold & Margaret Altman
The Carlo & Angela Baldassarra Family
Jeannie Baxter
Thomas H. Bjarnason
David & Anita Blackwood

Rudy Bratty & Family
David G. Broadhurst
Marjorie Bronfman
Edward Burtynsky
Ann Cameron
Ralph & Rose Chiodo & Family
Mario & Ginesia Cortelucci & Family
Beth & Jack Curtin
Dominic D'Alessandro & Family
Helen A. Dales
The De Gasperis Family
Elvio & Marlene DelZotto
Jack & Mary DelZotto Family
Sandra & Leo DelZotto
The De Meneghi Families
Camillo O. di Prata & Family
Dr. Helen J. Dow
Gail Drummond & Bob Dorrance
Mrs. Signy Hildur Eaton
Anthony & Lina Gagliano
Gaetano & Guiseppina Gagliano &
Family
Roger & Kevin Garland
The Albert Gasparro Family
Arthur & Esther Gelber
Peter & Shelagh Godsoe
Anthony & Helen Graham
Katharine & James Heal
Dr. Naomi Jackson Groves
Linda & Bob Krembil
Sonia & Arthur Labatt
Anthony Lacavera & Family
Michael Latner & Family
Steven Latner & Family
Greg Latremaille
Joan & Jerry Lozinski
David & Sarah Macdonald
Harry & Ann Malcolmson
Louisa & Benny Marotta & Family
Peter & Jane Marrone
Brenda Coleman Milrad & Aaron
Milrad
Bill Morneau & Nancy McCain
Gilles & Julia Ouellette
Tim & Frances Price
Jonas & Lynda Prince
Ida Pusateri & Family & Frank
Luchetta
Lynda Reeves
The Mario & Nadia Romano Family
The Felice Sabatino Family
Ms. Myra Sable
Luigi & Marylou Santaguida & Family
The Ivano Scarlato Family
Francis & Eleanor Shen
Robert & Lynn Simpson
Dr. J. Murray Speirs & Mrs. Doris
Huestis Speirs
Mrs. Donald B. Strudley
Dr. & Mrs. A.D. Taliano
Richard & Heather Thomson
The Varone Family
Mrs. O.D. Vaughan
Mr. & Mrs. William P. Wilder
Mr. & Mrs. Graham Williams
David & Shelagh Wilson
Anonymous (2)

PATRON FOUNDERS

Irene Anderson
Carol & David Appel
Salah J. Bachir
Shon & Cindy Barnett
Mr. William Bellman
Jeanny & Walter Bick

Edmund C. Bovey
Cecily & Robert Bradshaw
Mr. & Mrs. Sidney Bregman
Hans, Susan & Elise Brenninkmeyer
AA Bronson
Dennis & Mary Bunyan
Mrs. Jack Bush
Ms. M. Joan Chalmers
Sara & Richard Charney
Charles Coppa & Family
Louie Coppa & Family
Jane Corkin
Rupert Duchesne & Holly Coll-Black
Family
Mrs. John David Eaton
Dr. F. Michael & Colette Eggert
Dr. Mariano A. Elia
Shirley & Morris Emer
Sorel Etrog
Andrew & Andrea Federer
David & Angela Feldman
Marie LeSueur Fleming
Mr. Meredith Fleming
Judith A. Gelber
Nance J. Gelber & Dan Bjarnason
Molly & George Gilmour
K.M. Graham
Nona & William Heaslip
Ernest & Rivette Herzig
Avrom Isaacs
Dr. & Mrs. F.L.R. Jackman
Mr. & Mrs. Henry R. Jackman
Mrs. Mary Kershaw
Albert & Vera Kircheis
Marcia Klamer & Harry Klamer
Dr. & Mrs. Martin H. Kosoy
Michael Laine
Tom & Patricia La Pierre
Susan Latremaille
Mr. & Mrs. M.L. Lesser
Angelika & David Littlefield
Fay & Jules Loeb
Mr. & Mrs. J. Blair MacAulay
Dougal & Barbara Macdonald
Hart Massey
Mr. & Mrs. Robert Masters
Luella A.M.B. McCleary
Mr. & Mrs. Peter Meltzer
Estate of John H. Milnes
Audrey & David Mirvish
Nadir & Shabin Mohamed
Estate of Guido Molinari
Dr. M.R. Nadel
Estate of Mary Gordon Nesbitt
Mrs. Robert M. Nesbitt
Estate of Jack Nichols
John A. Pollock
Georgia Prassas
Patricia & David Rubin
Mr. & Mrs. Fred Schaeffer
Gerald Schwartz & Heather Reisman
Judy Schulich & David Stein
Frank & Marianne Seger
Isadore & Rosalie Sharp
Ada W. Slaight
Lynn & Stephen Smart
Mr. & Mrs. Clair Stewart
Mr. Edwin Stringer
E.P. Taylor
Matthew Teitelbaum & Susan Cohen
Valerie Greenfield Thompson & Hunter
E. Thompson
Estate of Elcy Harrison Wallace
Mrs. Anne Amys Walters
Isobel & John Wilkinson

Permanent Donors and Members

APRIL 1, 2016 – MARCH 31, 2017

Dr. & Mrs. R.G. Williamson
Mr. Lynton Wilson
Ross & Marion Woodman
Tony Woolfson & Judith Harris
Mr. Jennings D. Young
Anonymous (6)

FOUNDERS

Tony Allard
Estate of Eileen Allen
In memory of Patricia Joy Alpert
Evelyn Amis
Mr. John Andre
Mr. Hugh Anson-Cartwright
Bram & Bluma Appel
Barry Appleton
Mr. Daniel Arbour
Roy Arden
Tony & Anne Arrell
Estate of Mary Eileen Ash
Sydney Bacon
Gilbert Bagnani
James C. Baillie
Richard J. Balfour
Mrs. Saundray P. Ball
Mrs. C.S. Band
John T. Band
Jennifer Ivey Bannock
Dr. Henrietta Banting
Colette & Tom Barber
Mr. & Mrs. David C. Barber
Francine & Robert Barrett
Mr. & Mrs. Thomas J. Bata
W. Geoffrey & Sandie Beattie
David R. Beatty
Geoff & Nancy Belsher
Jalynn H. Bennett
J.P. Bickell
Diana Billes
Margaret H. Bindhardt
Mr. & Mrs. David Birkenshaw
C.S. Blackwell
Lawrence & Frances Bloomberg
Sean Bourdeau
Mrs. Edmund C. Bovey
William & Anna Maria Braithwaite
Marta Braun
Samuel Bronfman
Laing & Kathleen Brown
Bob & Tina Buchan
Terry Burgoyne
Mrs. J.S. Burnside
Marlene & Neville Burston
Dennis Burton
E.G. Burton
Valerie C. Burton & David H. Milman
Terry Bush
Eric Cameron
Sylvia & Irving Camlot
Barry Campbell & Debra Grobstein
Campbell
Guy & Margaret Carr-Harris

Mrs. C.R. Carsen
Estate of Barbara Carson
John R. Casey
Mrs. Clarice Chalmers
Ephram & Linda Chaplick
Janet Charlton & Robin Korthals
Yvonne Chiu
Matina Chrones
John & Lynn Clappison
Mrs. Max B.E. Clarkson
Estate of Christian Claude
Alan & Phyllis Cohen
Richard & Jessica Cohen
Ricky & Peter Cohen
Neil B. Cole
Mrs. Charles Comfort
Lionel F. Conacher & Joan T. Dea
Gerald Conway & Kanur Srinivasan
Daniel Cook & Suzanne Ivey Cook
Group Captain H.L. Cooper
Bruno M. & Ruby Cormier
Maria Corsini
Robert & Phyllis Couzin
Hon. G.A. Cox
H.C. Cox
Charles Lane Crang & Gertrude Eileen
Crang
James & Shirley Crang
Elizabeth & Douglas Crashley
Mrs. Sue Crassweller
Susan Crocker & John Hunkin
William & Jane Dale
Estate of Elizabeth Dales
Mr. John Harkness Dales
W.B. Dalton
Leslie & Anna Dan
Frank Darling
Mr. Harris C. Davidson
Mrs. Harry Davidson
Mr. Matthew S. Davidson
Elaine & Michael Davies
Dr. Michel D'Avirro
Mr. & Mrs. Henry F. Davis
Michael & Honor de Pencier
Mr. Bernard Desroches
Alan Dignan
The P.I. Di Luca Family
Mr. Robert Dirstein
Mr. & Mrs. Mark Donohue
Patrick Douglas
Mrs. Nancy Draper
Hon. Charles & Mrs. Anne Dubin
Mr. & Mrs. Ben Dunkelman
Mrs. D.A. Dunlap
Mr. & Mrs. Alan Y. Eaton
A.Y. Eaton
John David Eaton
Lady Eaton
R.Y. Eaton
Mrs. R.Y. Eaton
Thor & Nicky Eaton
Mrs. Timothy Eaton

Lonti Ebers & Bruce Flatt
Elizabeth G. Edwards
Mrs. Mary E. Edwards
Atom Egoyan & Arsinee Khanjian
The Elia Family
Estate of Evelyn Ellen Elrick
Estate of Georgina Ely
Bruce and Karen Etherington
Tye & Eileen Farrow
David & Elyssa Feldberg
Charles P. Fell
Tony & Shari Fell
Professor & Mrs. William O. Fennell
Betty Ramsaur Ferguson
David & Kristin Ferguson
Mr. Gerald Ferguson
R.W. Finlayson
Mrs. R.W. Finlayson
Alison Arbuckle Fisher
J.W. Flavelle
Lady Flavelle
David & Yvonne Fleck
Miss Emily Fodor
Gillian & Joseph Fodor
Sandra Forbes & Stephen Grant
J.W.C. Forster
E.C. Fox
Wayne & Isabel Fox
Carl M. Frankel
Mrs. Carl M. Frankel
Philip Fry
H.H. Fudger
Miss H.L. Fudger
Mimi Fullerton & Myer Brody
Michiko Gagnon
Mrs. E. Kathleen Gairdner
Mr. George R. Gardiner
Helen E. Gardiner
Mrs. Suzanne Gayn
Mrs. Arthur E. (Esther) Gelber
Douglas & Anne Gibson
Mrs. Jane M. Giffin
Mrs. Norman M. Gilchrist
David & Jacqueline Gladstone
Lorraine Gladstone
Estate of Penelope Glasser
Mr. & Mrs. J. Lawrence Goad
Mrs. Margaret Godsoe
Mr. H. Stephen Gooderham
Mr. John Lockhart Gordon
Mrs. Walter Lockhart Gordon
Mr. & Mrs. David Gottlieb
Alan & Renee Gozlan
Anais Granofsky
Mrs. Isabel S. Grant
Ron & Gitte Granofsky
Carol Gray
Karen Green
Edward R. Greig
Krystyne Griffin
George & Kitty Grossman
Greg & Susan Guichon
Andrew & Marianne Guizzetti
J.H. Gundy
The John Gutmann Revocable Trust
Frederick Hagan
Hon. Donna J. Haley
Mrs. Carol A. Hall
Mr. John A. Hall
Lynda Hamilton & Jack Cockwell
Nancy & Richard Hamm
Noel Harding
B. & P. Harris
Estate of John Richmond Harris
Norah Lyle Harris

W. C. Harris
Mr. William C. Harris
Jim & Melinda Harrison
Michael & Diane Hasley
Mr. & Mrs. William S. Hechter
Roy L. Heenan
Dr. Theodore Heinrich
Katharine W. Helm
Mary Frances & Keith Hendrick
Mrs. Diana Hillman
Evelyn & Irving Himel
Peter & Frances Hogg
Christopher E. Horne
Beth Horowitz
Mr. & Mrs. W.B.G. Humphries
Mrs. W.R.B. Humphries
Ann M. Hutchison & James P. Carley
Miss Janet E. Hutchison
Ian Ihnatowycz & Marta Witer
Sheldon Inwentash & Lynn Factor
Av Isaacs
Rev. Edward J.R. Jackman
Hon. H.N.R. Jackman
Diana & Philip Jackson
Valerie Godsoe Jennings
J.T. Johnson
Mrs. Marion Darte Johnson
W. McAllister Johnson
Mr. Grant W. Jones
Barry & Cathy Joslin
Mr. Jack Kade
Rita Kagan
Karen Kain & Ross Petty
Mucie & Kips Kaplansky
Mr. Ron Kaplansky & Ms. Liz White
Gale M. Kelly
Ken & Nancy Kembry
Hon. Sir Edward Kemp
Mr. Garry Neill Kennedy
Mr. Brian Kilpatrick
Mr. Joseph Klamer
Miss Marianne Klamer
Mr. David Knight
Margaret H. Knox
Mr. & Mrs. Harold Konopny
Don & Suzanne Kopas
Harold A. Kopas
Mr. Paul Labelle
R.A. Laidlaw
W.C. Laidlaw
Ron Lalonde & Jane Humphreys
Mr. Carmen Lamanna & Family
Else Landauer
Gerald Larkin
Hon. P.C. Larkin
Murray Laufer
Kenneth Lee
David Leith & Jacqueline Spayne
Col. R.W. Leonard
Mrs. R.W. Leonard
Rita Letendre
Dr. Peter K. Lewin
Dr. Emmanuel S. Lilker
Anne Lind
Stephen Lister & Molly Rundle
Phipps & Barbara Lounsbury
Dr. Daniel Lowe
John Lownsbrough
Peggy Lownsbrough
Louise MacCallum & Michael Barnstijn
Harry A. MacDonald
Drs. Jack & Asa MacDonell
Enid Rae MacLachlan
Mr. Jacques Mailhot
Marielle & Paul Mailhot

Permanent Donors and Members

APRIL 1, 2016 – MARCH 31, 2017

Mr. Pierre Mailhot
Janina & Antonio Mancini
Lynne & Allan Manfred
Mr. Ron Mann
Marlene Markle
Paul Marks & Shawna Granovsky
Mayta & Jerome Markson
Norbert & Clara Marocco & Family
Peter Marone & Mary Montanari
Chester D. Massey
Estate of H.A. Massey
John Massey
Vincent Massey
Arnold C. Matthews
Mrs. Arnold C. Matthews
T. Frank Matthews
Bruce Mau & Bisi Williams
Liza Mauer & Andrew Sheiner
Margaret McCain
James & Brenda McCutcheon
Mrs. Donald D. McKay
Miss Isabel McLaughlin
R.S. McLaughlin
J.S. McLean
Mark & Judy McLean
Paul & Martha McLean
John McNicoll
N.B. McPherson
Mr. & Mrs. George Mede
Ted & Julie Medland
Mr. James Meekison
Mrs. David Meltzer
Mrs. Bruno Mendel
Prof. Bruno Mendel
Mrs. Toni Mendel
Mr. Gerhard Merz
Daniel & Ingrid Mida
Mr. Gary S. Milrad
Ms. Marla Milrad
Mrs. Pauline Milrad
Ms. Rhonda Milrad
Henry Moore
Mr. & Mrs. Walter A. Moos
Mr. & Mrs. Stephen P.M. Morley
Ms. Sylvia A. Morley
David R. Morrice
Miss F. Eleanor Morrice
Jack Morris
Russell & Katherine Morrison
G.A. Morrow
Mrs. Graham Morrow
Estate of Alwyn Mullin-Henry
Mr. Cawthra F. Mulock
Dorothy P. Munroe
Dr. Sean B. Murphy
The M. Muzzo Family
Dr. & Mrs. Earl Myers
Dr. & Mrs. Lou Myers
Mr. & Mrs. Kazuo Nakamura
Michael F. B. Nesbitt
Gordon & Janet Nixon
Mr. Dennis Oppenheim

Edmund B. Osler
Bernard & Sylvia Ostry
Charles Pachter
Estate of Hilda McLaughlin Pangman
Michael Parke-Taylor & Barbara Butts
Mr. Geoffrey C. Parkin
John C. Parkin
G. Scott Paterson & Tamara Bahry-
Paterson
Col. Henry M. Pellatt
Mrs. Reginald Pellatt
The Perkell Family
Larry Pfaff
Michael Pflug
Lorne Pierce
Mr. Lawrence Pinkney
Sandra & Jim Pitblado
Sylvia Platt
Rabbi & Mrs. W. Gunther Plaut
Brian & Megan Porter
Chris Poulsen
Vivienne Poy
Mr. Lucio Pozzi
Robert J. Dickinson Pyne
Cecelia Quarrington
Geoffrey Rans, Goldie Rans & Virginia
Hung
Keith Ray & Leslie Gales
Tamara Rebanks & James Appleyard
Ernest & Flavia Redelmeier
Francis & Ruth Redelmeier
Mr. & Mrs. W. Redelmeier
Greg Reed & Heather Howe
Mr. & Mrs. Donald B. Redfern
Marcia E. Reid
Joel & Jill Reitman
Lenore Richards
Malcolm D. Richardson
Dr. Bill Ring
Mrs. George W. Robinette
Col. F.B. Robins
Dr. Martin L. Robinson
Alfred Rogers
Walter & Lilo Roschlau
Jocelyn Ross
Dr. A. Rostas
Earl Rotman & Ariella Rohringer
Penny Rubinoff
Arthur Ruddy
Mrs. Belle Ruddy
Nancy Ruth
Jared Sable
Mr Morris Saffer
Sigmund Samuel
Mr. & Mrs. Andrew Sarlos
Lionel H. & Carol Schipper
Tanna & Seymour Schulich
Frank & Marianne Seger
Mr. & Mrs. Stanley R. Shenkman
Mr. & Mrs. Ernie Sheriff
Nan Shuttleworth
Evan & Garnet Siddall

Sir Clifford Sifton
David P. Silcox & Linda Intaschi
Mrs. Saul A. Silverman
Bruce & Tracy Simpson
George G. Sinclair
Mrs. George G. Sinclair
Mr. Robert Siskind
Harriette Dixon Boulton Smith
Dr. Michael Sole
Gerald & Marion Soloway
Edward & Marisa Sorbara
Gregory & Kate Sorbara
Joseph & Antoinette Sorbara
Mr. Erick Spencer
Andrew Sprachman
Barney Sprachman
Mr. & Mrs. Mandel Sprachman
Robert Sprachman
Maureen & Wayne Squibb
Barbara L. Steele
E.W. Steiner
R.N. Steiner
Theodore M. Sterling
Dr. Max Stern
Jeff Stober
Dr. Mary Louise Stock
Valentine N. Stock
Georgine Strathy
Donald B. Strudley
Estate of Frances C. Strudley
Mrs. Mary Alice Stuart
Kate Subak & Family
Mr. Richard I. Sutton
George Swinton
Ms. Moira Beth Swinton
Ms. Nelda Jill Swinton
Mr. John H. Switzer
Carol Tanenbaum
Marcella & Joseph Tanzola
Ronald Tasker
Mr. & Mrs. Charles Taylor
Mrs. E.P. Taylor
Charles & Lois Thomson
Miss Hilda Harkness Thomson
Dr. Walter M. Tovell
Mrs. Lillian Massey Treble
Donald & Elaine Triggs
Mrs. Helen Trier
Mrs. Emily Fodor Van Rhee
A. Murray Vaughan
J.J. Vaughan
Dr. Y. Verbeeten
Mrs. Bernice Vincent
Sir Edmund Walker
Dr. J. Allan Walters
Mrs. H.D. Warren
Marla & Larry Wasser
Phyllis & William Waters
Estate of Joan B. Watson
Mrs. Melville C. Watson
Mr. & Mrs. Michael Wayne
Dr. Marvin Weisler
James W. Westaway
Stephen D. White
Dr. Alan G. Wilkinson
H.H. Williams
Hamilton B. Wills
Mrs. Hamilton B. Wills
Dorothy J. Wilson
Mrs. John Alexander Wilson
Dr. Murray Wilson
Clare E. Winterbottom
E.R. Wood
Mrs. E.R. Wood
Frank P. & Emma Wood

T.H. Wood
Sally Wright
Mr. & Mrs. John Yaremko
Morden Yolles
Francis & Marvin Yontef
Mr. Irving Zucker
Anonymous (9)

ENDOWMENT BENEFACTORS

Jocelyne Alloucherie
Mr. Peter Allward
Mrs. Rosemary Amell
St. Clair Balfour
Ms. Fern Bayer
Mrs. John Chipman
Mrs. Marilyn Conklin
Mrs. Gordon Conn
Peter Denny & Marion Johnson
Dr. P. Forbath
Prof. & Mrs. P.W. Fox
Dr. & Mrs. Cecil Gilbert
Mr. Skip Gillham
Mr. W. Gilling
Mr. Joseph Godfrey
Dr. J. Goodman
Mr. Lorne Graham
Mary Frances & Keith Hendrick
Mr. J. Hewetson
Mrs. H. Hunter
Dr. Jane Irwin
Dr. Joshua Josephson
Mrs. Helen Karrel
Dr. & Mrs. Oscar S. Kofman
Mr. & Mrs. John Kudelka
Mrs. Ruth Langley
Dr. & Mrs. Bernard Laski
Mr. & Mrs. W. Leonard
Mr. Christian Mailhot
Mrs. A. Matthews
Mr. & Mrs. Louis Melzack
Dr. J.E. Mergelas
Mrs. Marian Moore
Mr. Pierre Myrand
Mr. Ron Peters
Mr. Howard Phillips
Mrs. Ralph Presgrave
Mr. & Mrs. Bernard Rasch
Miss F. Richards
Mr. Robert Sachter, Q.C.
Mr. I. Schwartz & Ms. J. Hlinka
Dr. Hugh Scully
David & Ruth Shaul
Mrs. Roni Shier
Mr. Peter Silverman
Mrs. Arthur Squires
Mrs. A. Steiner
Dr. J. Uvira
Mrs. Helga Vonwicht
Mr. R. Wadds
Mr. C. Weyman
Mr. David Wright

BENEFACTORS

Mrs. Valerie Applebaum
Ms. Svetlana Aronov
A. Auld
Mr. Andre Bachand
Bob & Mona Bandeem
Mr. Flavio Belli
Mr. Hugh Bonney
Mr. & Mrs. L. Bonnycastle
Ms. Margaret Brennan
Estate of John E. Brent
Mrs. Marjorie Bridges
Mr. F. Briggs

Permanent Donors and Members

APRIL 1, 2016 – MARCH 31, 2017

Mrs. Qennefer Browne
Mrs. Edgar Burton Sr.
Mr. G. Burton
Mr. C. Bush
Mr. Jack Bush
Dr. David Brez Carlisle & Dr. Roxane
Carlisle
Marion & Dixon Chant
Ms. Olga Charyshyn
Mr. Timothy Chisholm
Mrs. Pamela Clark
Mr. Ian Collier
Mrs. A. Davidson
Mr. Angelo Delzotto
Mrs. Samuel Dingman
Mrs. C. Dobell
Mr. B. Dougall
Mrs. Darrell Draper
Simon Dresdnere
Dagny Dryer
Miss Marie DunSeith
Mr. C. Ellis
Mr. & Mrs. G. Fee
Mr. David Finn
Mrs. Nigel Foulkes
Mrs. D. Furnival
Mr. Bertrand Gerstein
Mr. Ernest Gill
Mrs. Kathleen Gilling
Mrs. Samuel Godfrey
Mr. Duncan Gordon
Prof. John Grant
Mrs. Gerald Greene
Mr. Anthony G. Griffin
Mr. & Mrs. Harold Groves
Mrs. C. Gundy
Mrs. Robert M. Hamilton
Dr. & Mrs. Robin Harris
Dr. & Mrs. Ian Hector
Major G.T. Heintzman
Mrs. George Heintzman
Mrs. Robert Hetherington
Mr. Lorne Hetherington
Ms. Leanne Hull
Mr. John Hungerford
Mr. K. Hunter
Mrs. H.N. Jackman
Mrs. Judith James
Mr. Richard Johnston
Mrs. W. Johnston
Mr. Meredith Jones
Mr. Emerich Kaspar
Mr. E. Kernaghan
Mr. Neil Kernaghan
Marion & Allen Lambert
Mrs. Dorothy Lecker
Mrs. R. Lind
Mrs. Dorothy Loeb
Mr. Mark Luca
Mr. R. G. Macdonald
Mr. & Mrs. W.A.R. MacFadden
Mr. Robert MacIntyre

Mr. J.P.S. MacKenzie
Mrs. Lois MacKenzie
Mrs. A. MacLean
Mr. J. Mar
Mr. J. Martin
Mr. Paul Matthews
Mr. D. McClelland
Mr. & Mrs. J. Moore
Mr. Mavor Moore
Mr. Raymond Moriyama
Dr. E. Murphy
Dr. Roald Nasgaard
Mr. & Mrs. Louis Odette
Kenneth R. Oswald
Mr. Thomas Parkin III
Mr. & Mrs. R. Pearsall
Mr. William Pehudoff
Ms. Diana Reitberger
Mrs. N. Robertson
Mr. William Robertson
Mrs. Joan Rogers
Mr. Allen Rosen
Mrs. Audrey Savage
Dr. & Mrs. John A. Sherman
Dr. & Mrs. Ernest Sirluck
Mrs. Anne Smith
Margaret G. Smith
Ms. Margaret Stacey
Mr. Robert Stacey
Dr. David Stinson
Mr. Richard J. Storr
Ms. Judith Terry
Mr. & Mrs. Noah Torno
Mrs. G. Upjohn
Prof. E. Walker
Mr. Wentworth Walker
Mrs. Leah Walls
Mr. & Mrs. Percy Waxer
Estate of David G. Whitmore
Florence & Mickey Winberg
Mr. Frank Winter
Mr. Roelf Woldring
Mrs. G.D. Wotherspoon
Mr. Christopher E. Youngs
Anonymous (1)

CORPORATIONS & FOUNDATIONS

CORPORATE LANDMARK FOUNDERS

Aimia Inc.

CORPORATE GRAND FOUNDERS

BMO Financial Group
Canada Packers Limited
CIBC
CTVglobemedia
Fairfax Financial Holdings Ltd.
George Weston Limited
The Globe and Mail
Gluskin Sheff + Associates Inc.
NELVANA Limited
RBC Financial Group

Scotiabank
St. Joseph Communications
TD Bank Financial Group
Anonymous (2)

CORPORATE DISTINGUISHED FOUNDERS

Brookfield Group
Chrysler Canada Ltd.
Cineplex Media Inc.
Goldman Sachs Canada Inc.
Imperial Oil Ltd.
Nesbitt Burns Inc.
Nesbitt Thomson Inc.
Norcen Energy Resources Ltd.
PACART
Rogers Communications Inc.
The Sorbara Group
Teknion Corporation
The TLN Telelatino Television Group
Anonymous

CORPORATE PATRON FOUNDERS

aa bronson in memory of General Idea
Inc.
Alcan Canada Limited
Allstream
Ascolectric Limited
Astral Out-of-Home
AT&T Canada Inc.
Bell Canada
Benson & Hedges (Canada) Inc.
Brascan Limited
Bruce Mau Design
Bumper Development Corporation Ltd.
The Cadillac Fairview Corporation
Canada Permanent Trust Company
Carling O'Keefe Limited
Chemical Bank of Canada
Chubb Insurance Company of Canada
Cineplex Entertainment
CN
Confederation Life Insurance Company
Costain Limited
Deloitte.
Dominion Securities Ltd.
Eaton's of Canada Ltd.
EnCana Corporation
Ericsson Canada Inc.
Ford Motor Company of Canada,
Limited
Gulf Oil Canada Limited
H.H. Angus Associates Limited
Hiram Walker Resources Ltd.
House & Home Media
I.B.M. Canada Ltd.
Inco Limited
The Jack Bush Heritage Corporation
Knob Hill Farms Limited
McLeod Young Weir Limited
Mediacom Industries Inc.
Midland Bank of Canada
Mobil Oil Canada, Ltd.
The Molson Companies Donation Fund
National Bank Financial Group
National Trust Company, Limited
Noranda Group
Northern & Central Gas Corporation
Limited
Northern Telecom Limited
Pioneer Electronics of Canada, Inc.
Power Corporation of Canada
PricewaterhouseCoopers LLP
Procter & Gamble Inc.
RBC Wealth Management

The Royal Trust Company
Shell Canada Limited
Simpsons, Limited
Simpson-Sears Inc.
Southam Inc.
St. Marys Cement Inc.
The Steel Company of Canada, Limited
Sun Life Financial
Teleglobe Canada
Texaco Canada Inc.
The Thomson Corporation
Torstar Corporation
Torys LLP
Touche Ross & Co.
TransCanada Pipelines Limited
Vale Inco
Wood Gundy Limited
Yamana Gold Inc.
Anonymous (3)

FOUNDATION LANDMARK FOUNDERS

The W. Garfield Weston Foundation

FOUNDATION GRAND FOUNDERS

American Express Foundation
Bennett Family Foundation
The Delaney Family Foundation
Fidelity Foundation
Jackman Foundation
The Henry White Kinnear Foundation
Ivey Foundation
Catherine and Maxwell Meighen
Foundation
The J.W. McConnell Family Foundation
Henry Moore Foundation
RBC Foundation
Rotman Family Foundation
Terra Foundation for American Art
Anonymous

FOUNDATION DISTINGUISHED FOUNDERS

American Friends of Canada, Inc.
J.P. Bickell Foundation
Eaton Foundation
The Fraser Elliott Foundation
Imperial Oil Foundation
Longo's Family Charitable Foundation
The McLean Foundation
The Ontario Trillium Foundation
Budd Sugarman Foundation
The Tecolote Foundation
The Volunteers of the Art Gallery of
Ontario
Anonymous

FOUNDATION PATRON FOUNDERS

The Atkinson Charitable Foundation
E.W. Bickle Foundation
Marjorie & Gerald Bronfman Foundation
Donner Canadian Foundation
La Fondation Emmanuelle Gattuso
The Joan and Clifford Hatch Foundation
The Jay & Barbara Hennick Family
Foundation
The Hope Charitable Foundation
Hal Jackman Foundation
Laidlaw Foundation
The Salamander Foundation
The Schulich Foundation
The Schumacher Foundation
E.P. Taylor Foundation
The Trier Fodor Foundation
Anonymous

Permanent Donors and Members

APRIL 1, 2016 – MARCH 31, 2017

WORKS OF ART AND LIBRARY

LUMINARY FOUNDERS

Kenneth & Marilyn Thomson

VISIONARY FOUNDERS

David Thomson

MILESTONE FOUNDERS

Joey & Toby Tanenbaum

TRANSFORMING FOUNDERS

Betty Ann & R. Fraser Elliott
Murray Frum & Nancy Lockhart
Samuel & Esther Sarick
Howard & Linda Sokolowski

LANDMARK FOUNDERS

Vivian & David Campbell
Mr. & Mrs. John Flemer
Ydessa Hendeles
NELVANA Limited

GRAND FOUNDERS

Thomas H. Bjarnason
David & Anita Blackwood
Edward Burtynsky
Walter Carsen
Morey & Jennifer Chaplick
Mrs. Margaret A. Crang
Dr. Shashi B. & Janet E. Dewan
Estate of Sorel Etrog
Sondra & Allan Gotlieb
Ethel & Milton Harris
George Hartman & Arlene Goldman
Lawrence Heisey
Richard M. Ivey
Richard & Donna Ivey
Michael & Sonja Koerner
Phil Lind
Harry & Ann Malcolmson
Maple Leaf Foods
Paul Marks & Shawna Granovsky
Dr. Brian McCrindle
David Milne & Pamela Gibb-Carsley
Brenda Coleman Milrad & Aaron
Milrad
Audrey & David Mirvish
The Henry Moore Foundation
Michael Nesbitt
Mr. Victor Peters
Carol & Morton Rapp
Alison & Alan Schwartz
Michael & Janet Scott
Sandra Simpson
Jay Smith & Laura Rapp
Michael Snow
Rose & Charles Tabachnick
Mrs. Max Tanenbaum
Estate of Vincent Tovell

Irving & Sylvia Ungerman & Family
Mrs. L. Marguerite Vaughan
Mr. & Mrs. William P. Wilder
Robin & David Young
Anonymous (2)

DISTINGUISHED FOUNDERS

Harold & Margaret Altman
Dr. Michael Braudo
Andrea & Charles Bronfman
Stephen Brown & Brenda Woods
Jane Corkin
Sheila Curnoe
Roger I. Davidson
Susan C. Davidson
Fredrik S. & Catherine Eaton
Estate of John J. Elder
Mr. and Mrs. John J. Elder
Dr. Naomi Jackson Groves
Barbara Gunn
Samuel & Ruth Karpman
Sandra Rotman
Monty & Judith Simmonds
Dr. & Mrs. A.D. Taliano
Sydney Lawrence Wax & Lillian Lisa
Wax
Anonymous (2)

PATRON FOUNDERS

Salah J. Bachir & Jacob Yerex
Walter Bick
Dennis & Mary Bunyan
Barry Campbell & Debra Grobstein
Campbell
Henry M. Campbell
Jeffrey & Lesley Campbell
Roy G. Cole
Alan & Marilyn Davis
Dr. F. Michael & Colette Eggert
David & Yvonne Fleck
Jim & Margaret Fleck
Robert Fones
Mrs. Miriam Gabo
Michiko Yajima Gagnon
Betty & Martin Goodwin
Ernest & Rivette Herzig
Eleanor & Russell Hutchison
Mariel O'Neill-Karch & Pierre Karch
James Lahey & Pym Buitenhuis
Michael Laine
Tom & Patricia La Pierre
Dr. & Mrs. H. Lewis
Angelika & David Littlefield
John Massey
Estate of Guido Molinari
Gilles & Julia Ouellette
Estate of Dr. Sheila Pollock
Dr. Radu Popovici
Theresa Redelmeier
Patricia Regan
Sandra & Joseph Rotman
Frank & Marianne Seger

Stephen & Lynn Smart
Ruth & Hyman Soloway
The Vernon Family
Anonymous (5)

FOUNDERS

Tony Allard
Herbert Alpert
Hussain Amarshi
Carol & David Appel
Barbara Astman
Mary Stewart Bagnani
Christopher Bain & Carley Kastelic
Ann E. Walker Bell
Sean Bourdeau
Jessica Bradley
Marta Braun
Sidney & Gladye Bregman
Stephen Bulger & Catherine Lash
Dennis Burton
Ephram & Linda Chaplick
Susan Chater
CIBC
Maria Corsini
William & Jane Dale
Ian & Kiki Delaney
Maya Dille
Zoe Dille
Donald Ellis
Janieta Eyre
David & Kristin Ferguson
Mr. & Mrs. Nicholas Fodor
Mimi Fullerton
Emmanuelle Gattuso
Marvin Gelber
Lorraine Gladstone
Mira Godard
Noel Harding
B. & P. Harris
Estate of John Richmond Harris
Pamela Harris & Randall McLeod
George Hunter
Ann M. Hutchison & James P. Carley
Sharilyn Ingram & Wayne Morgan
Avrom Isaacs
Dr. & Mrs. Martin H. Kosoy
Brian Lahey
Suzy Lake
Gordon Lenko & Lucie Charbonneau
Rita Letendre
Philip B. Lind
Liz Magor
Marlene Markle
James Mastin
John Mastin
John McNicoll
Gerald Mendel
Guy Molinari
Aurelia & Mickey Ostro and Family
Bernard & Sylvia Ostry
Jeanne Parkin
Michael Parke-Taylor & Barbara Butts
Larry Pfaff
Michael Pflug
Lenore Richards
Mr. Lewis Richardson
Mr. Ronald Rolls
Beverly & Fred Schaeffer
Francis & Eleanor Shen
Barry Sniderman
Dr. Michael Sole
Andrew Sprachman
Barney Sprachman
Robert Sprachman
Georgine Strathy

Mrs. Mary Tasker
Brian & Peter Walker
Ann & Marshall Webb
Colette Whiten & Paul Kipps
Mr. & Mrs. William P. Wilder
Henry Wiseman & Janet M. Wood
Anonymous (2)

Recognition is given for gifts received
between April 1, 2016 and March 31, 2017.

Statement of Operations

APRIL 1, 2016 – MARCH 31, 2017

Year ended March 31

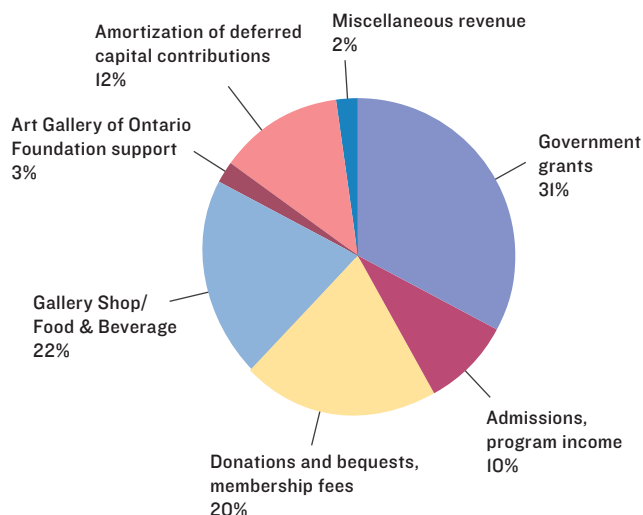
(reported in thousands of dollars)

REVENUE	2017	2016
Government grants	\$22,714	\$22,767
Admissions, program income	7,093	4,819
Donations and bequests, membership fees	14,825	14,827
Gallery Shop/Food & Beverage	16,725	13,234
Art Gallery of Ontario Foundation support	2,368	1,932
Amortization of deferred capital contributions	8,951	8,914
Miscellaneous revenue	1,448	1,903
Total Revenue	\$74,124	\$68,416

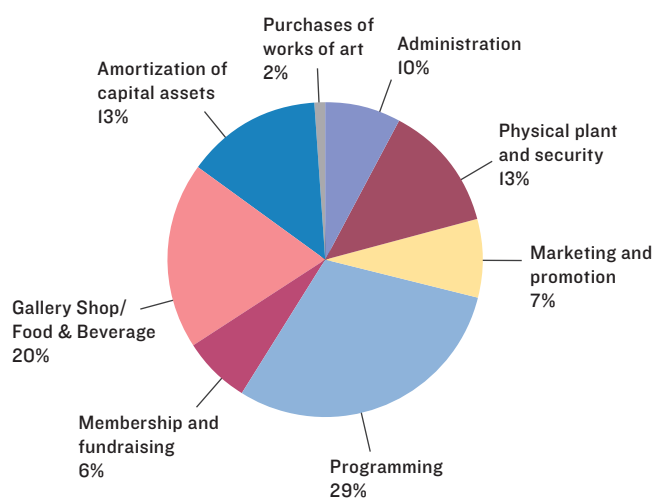
EXPENSES	2017	2016
Administration	\$7,580	\$5,911
Physical plant and security	9,804	9,683
Marketing and promotion	4,906	4,051
Programming	21,290	19,800
Membership and fundraising	4,851	4,711
Gallery Shop/Food & Beverage	15,006	13,060
Amortization of capital assets	9,314	9,248
Purchases of works of art	1,344	742
Total Expenses	\$74,095	\$67,206

Excess of revenue over expenses for the year	\$29	\$1,210
Remeasurements related to pension plan	3,244	(2,482)
Net deficit, beginning of year	(1,639)	(367)
Net surplus (deficit), end of year	\$1,634	(\$1,639)

REVENUE



EXPENSES



NOTES

- The above statement of operations provides a summary of the AGO's financial activity for 2016/2017 and 2015/2016. Financial statements for the 2016/2017 fiscal year (April 1, 2016 to March 31, 2017), audited by Ernst & Young LLP are available upon request from the Art Gallery of Ontario. (Director's Office Tel: 416-979-6613).
- In the 2016/2017 fiscal year, the AGO received gifts of works of art with an approximate value of \$16,878,000. This is not reflected in the financial data above, but is included in the AGO's 2016/2017 audited financial statements.
- The AGO records capital asset purchases at cost and then amortizes its capital assets over the useful life of the asset. Donations and grants received for the purchase of capital assets are deferred and then amortized based on the useful life of the asset.
- Remeasurements related to pension plan is the difference between actual and expected return on pension plan assets. Additional details can be found in the AGO's 2016/2017 audited financial statements.

Balance Sheet

APRIL 1, 2016 – MARCH 31, 2017

As at March 31

(reported in thousands of dollars)

ASSETS	2017	2016
Current assets	\$22,844	\$21,515
Accrued pension asset	3,115	0
Net capital assets	227,822	226,014
Total Assets	\$253,781	\$247,529
LIABILITIES		
Current liabilities	\$27,694	\$26,354
Accrued pension liability	0	333
Deferred capital contributions	224,453	222,481
Total Liabilities	\$252,147	\$249,168
Cumulative net surplus (deficit)	\$1,634	(\$1,639)
Total liabilities and net surplus (deficit)	\$253,781	\$247,529

NOTES

I. Works of art are included in net capital assets at the nominal value of \$1,000.