

THE THOMSON COLLECTION

---

**J.E.H. MACDONALD**  
**1873–1932**

## **J.E.H. MacDONALD**

born Durham, England, 1873  
died Toronto, Ontario, Canada, 1932



### **Poplars and Rock, Sturgeon Bay Near Pointe au Baril**

1931  
oil on paperboard  
103920



### **Georgian Bay**

1931  
oil on wood-pulp board  
106747



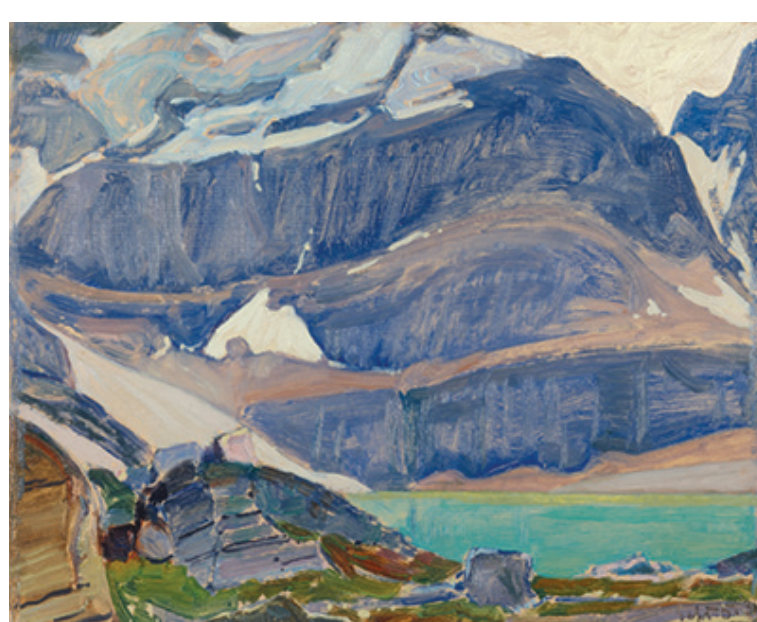
### **Round Rock, Tent Bay, Bathsheba, Barbados**

1932  
oil on wood-pulp board  
106741



### **Southend of Beach with Aloe Fern, Cattlewash, Bathsheba, Barbados**

1932  
oil on wood-pulp board  
106742



### **Lake Oesa, Rocky Mountains**

September 5, 1930  
oil on paperboard  
70553



### **Lake Oesa**

1929  
oil on wood-pulp board  
106743



### **Lake O'Hara**

1930  
oil on canvas  
2004/8



## Lake O'Hara, Rockies

1926

oil on wood-pulp board

6104001

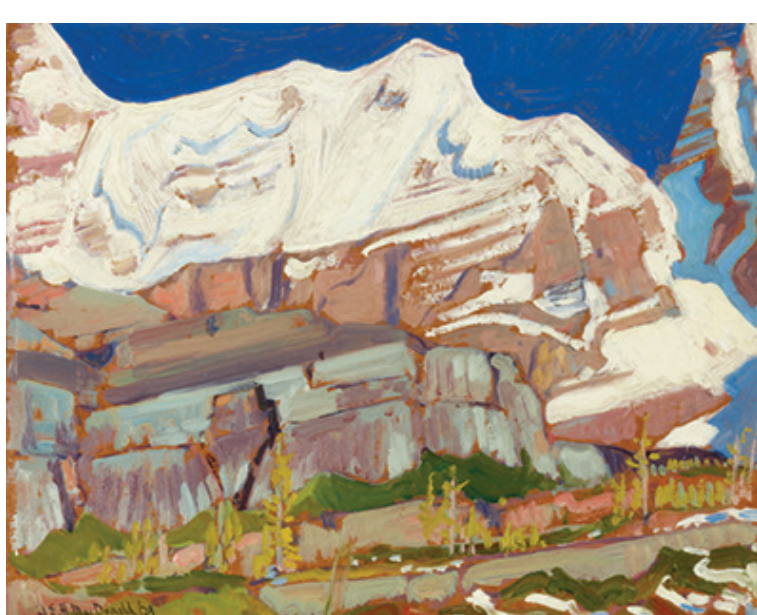


## Mount Owen, From Lake McArthur (Afternoon Light)

date unknown

oil on wood-pulp board

103915



## Snow on Mt. Lefroy from Oesa Trail

September 1929

oil on wood-pulp board

103901



## Fall Evening, Thornhill

1920

oil on wood-pulp board

103878



## Showery Sky and Rainbow, Thornhill

1929

oil on wood-pulp board

103876



## Surf Scene, Nova Scotia

1922

oil on wood-pulp board

108431



## A Nova Scotian Fishing Boy

1922

oil on wood-pulp board

103883



## **Nova Scotia Coastal Scene**

1922

oil on wood-pulp board

103854



## **One Nee Hill, Petite Rivière, Nova Scotia**

1922

oil on wood-pulp board

103927



## **Mill Dam, Petite Rivière, Nova Scotia**

1922

oil on wood-pulp board

103875



## **Cliff Near St. Hubert, Montreal River**

1919

oil on wood-pulp board

103895



## **Red Sumach**

date unknown

oil on composite wood-pulp board

125886



## **Algoma Landscape**

September 1919

oil on composite wood-pulp board

103859



## **Maple Boughs, Algoma**

date unknown

oil on composite wood-pulp board

103879



## Tangled Woods, Algoma

circa 1920

oil on wood-pulp board

103900



## Algoma Stream

1920

oil on wood-pulp board

103856



## Mountain Ash (Rowanberries)

1922

oil on canvas

69148



## Batchewana Rapids, Algoma

date unknown

oil on composite wood-pulp board

103902



## Solemn Land

1919

oil on paperboard

108076



## Algoma Landscape

1924

oil on wood-pulp board

103860



## Algoma

1920

oil on wood-pulp board

103874



## Agawa Canyon, Algoma

date unknown

oil on wood-pulp board

103907



## Stream in Algoma

circa 1919–1920

oil on wood-pulp board

103911



## Near Montreal River, Algoma

1919

oil on wood-pulp board

103908



## Trees and Sunlight, Algoma

date unknown

oil on wood-pulp board

103904



## Tangled Bush, Algoma

1919

oil on paperboard

2004/28



## Agawa River, Algoma

1920

oil on wood-pulp board

103918



## October Evening, Algoma

1921

oil on wood-pulp board

103909



## **The Dipper, Moonlight, Northland, Algoma**

circa 1921

oil on paperboard

108446



## **Algoma**

1918

oil on composite wood-pulp board

103889



## **Cliffs, Algoma**

1920

oil on composite wood-pulp board

103891



## **Algoma Waterfall**

1919

oil on composite wood-pulp board

106748



## **Bridle Falls Canyon**

1919

oil on composite wood-pulp board

103922



## **In Algoma**

date unknown

oil on wood-pulp board

103926



## **A Rapid in the North**

1913

oil on canvas

103852



## Log Drive, Gatineau

1914

oil on composite wood-pulp board

103914



## Gatineau River Near Cascades

1914

oil on composite wood-pulp board

103910



## Harvest Evening, Thornhill

circa 1920

oil on wood-pulp board

103877



## Little River

circa 1918

oil on paper mounted on pulpboard

106746



## Thornhill, Ball's Hill

1919

oil on wood-pulp board

103880

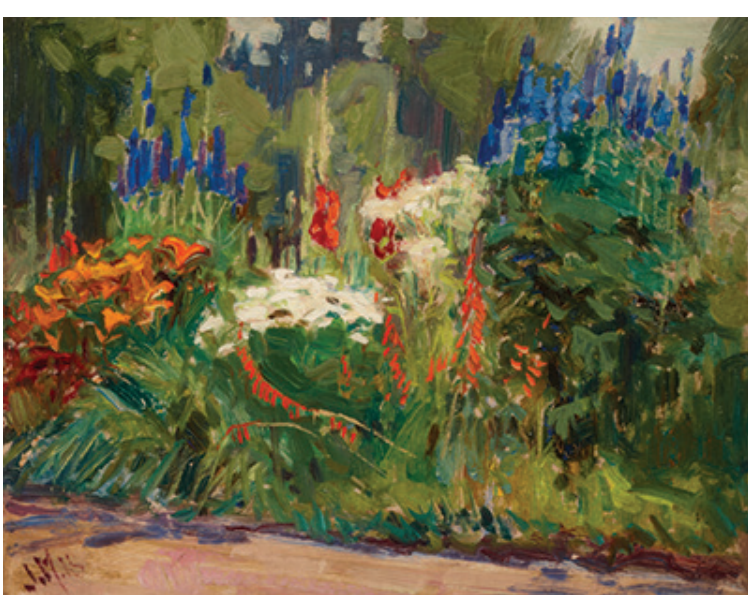


## Garden, Thornhill

1929–1930

oil on composite wood-pulp board

103884



## Flower Border, Usher Farm, York Mills

1918

oil on wood panel

103862



## Jackknife Island, Georgian Bay

date unknown

oil on composite wood-pulp board

103885



## Autumn, Georgian Bay

1916

oil on composite wood-pulp board

103919



## Dr. James McCallum's Home on Go Home Bay, Georgian Bay

1912

oil on composite paperboard

108432



## Sunset, Lake Simcoe

1919

oil on composite wood-pulp board

125885



## Fine Weather, Georgian Bay

1913

oil on canvas

103858



## Georgian Bay

1912

oil on wood-pulp board

125887

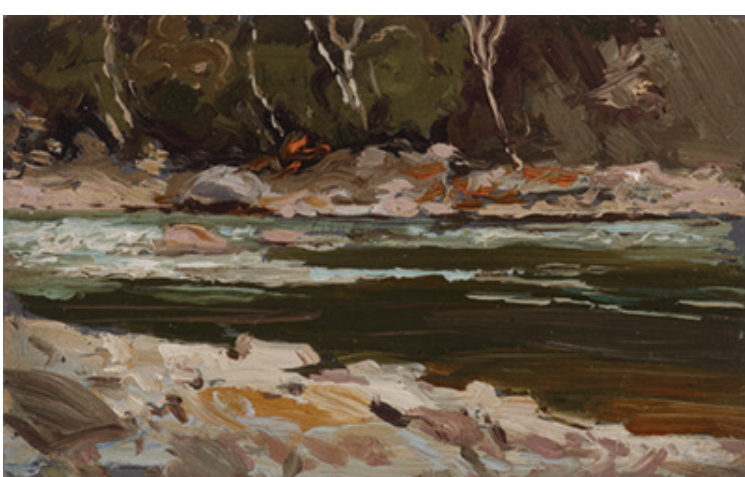


## Charles Band Island

circa 1930

oil on composite wood-pulp board

103921



## Humber River at Baby Point

circa 1910

oil on wood-pulp board

103881



## Log Drive, Gull River Lumber Co.

1911

oil on wood-pulp board

103899



## Early Spring

1913

oil on composite wood-pulp board

103886



## Winter, High Park

date unknown

oil on composite wood-pulp board

103917



## Georgian Bay

date unknown

oil on wood-pulp board

103898



## Snow Flurries, Algonquin Park

1914

oil on canvas

106744

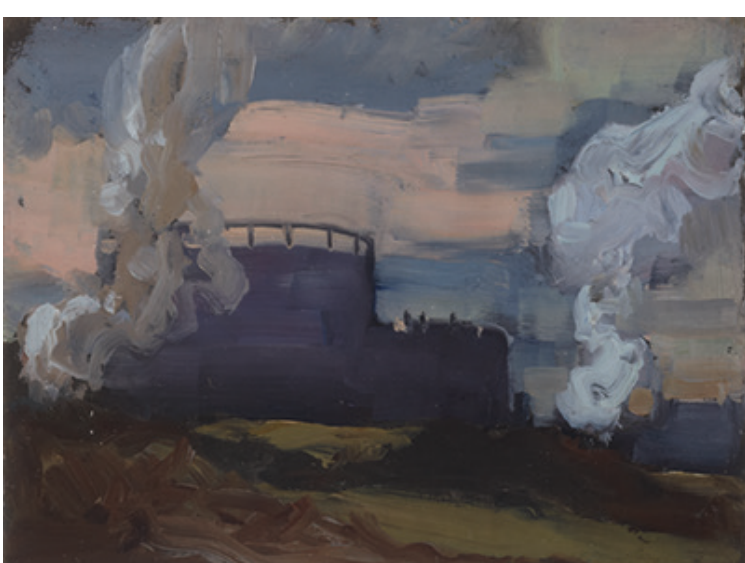


## Burks Falls

1909

oil on paperboard

103833



## Trucks and Traffic

1912

oil on paperboard

103857